

STANDARD INSTRUMENT ARRIVAL (STAR)  
SURGN FOUR ARRIVAL (NON-JET)(RNAV)  
ADELAIDE, SA (YPAD)

28 NOV 2024

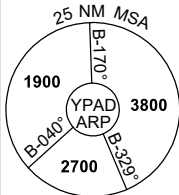
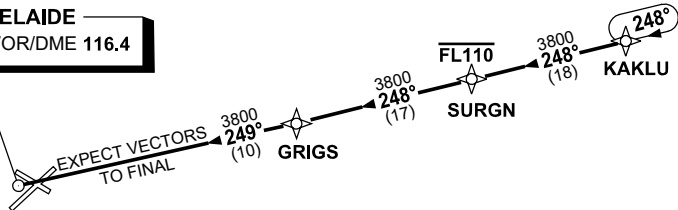
ATIS 116.4 134.5	APP 118.2	TWR 120.5	SMC 121.7	Bearings are Magnetic Elevations in FEET AMSL
---------------------	--------------	--------------	--------------	--

NOT TO SCALE



**SPEED**  
**MAX IAS 250KT**  
**BELOW 10,000ft**

**ADELAIDE**  
**AD** VOR/DME 116.4



ATC APCH SPEEDS		
NM	FM TD	SPEED KT
20	AT 230	
10	185-160	
5	160-150	

10 NM MSA 3800

**TRANSITION:**

**KAKLU:** From KAKLU track 248° to SURGN  
**Cross** SURGN AT or BLW FL110  
Then follow ARRIVAL instructions

**ARRIVAL: SURGN FOUR**

**ALL RWYS:**

- From SURGN track 248° to GRIGS
- Track 249° to AD VOR
- Expect radar vectors to final approach

**COMMUNICATIONS FAILURE: PROCEDURE IN IMC**  
**IF ABLE CTC AD APP 03-9235-2012**

- Squawk 7600, comply with vertical navigation requirements, but not below MSA.
- Track via the latest STAR clearance to the nominated runway, then fly the most suitable approach in accordance with ERSA EMERG Section 1.5.

Changes: WAYPOINT NAME, VALIDITY INDICATOR.

PADSR17-181