

STANDARD INSTRUMENT ARRIVAL (STAR)
 ATPIP THREE ARRIVAL (NON-JET) (RNAV)
ADELAIDE, SA (YPAD)

17 JUN 2021

ATIS 116.4 134.5	APP 118.2	TWR 120.5	SMC 121.7	Bearings are Magnetic Elevations in FEET AMSL
---------------------	--------------	--------------	--------------	--

NOT TO SCALE

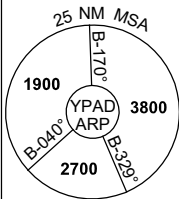
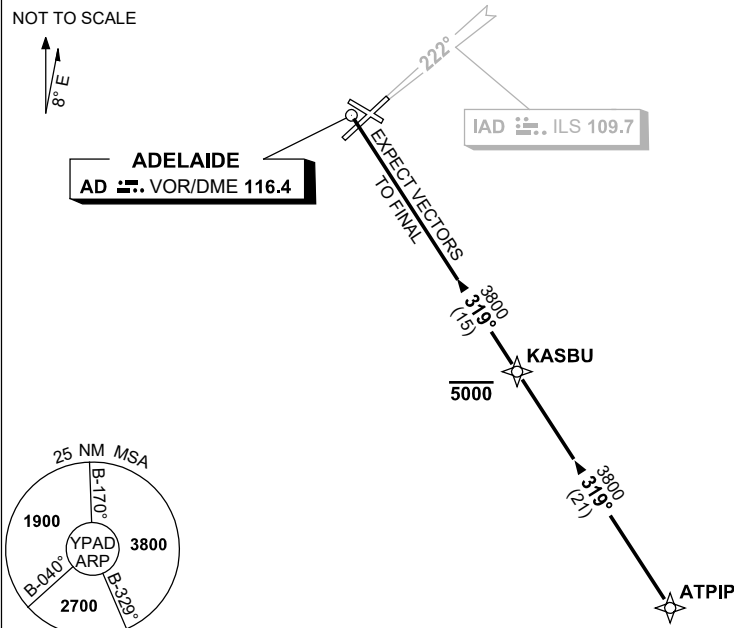


ADELAIDE
 AD VOR/DME 116.4

IAD ILS 109.7

SPEED
 MAX IAS 250KT
 BELOW 10,000FT

ATC APCH SPEEDS	
NM FM TD	SPEED KT
20	AT 230
10	185-160
5	160-150



10 NM MSA 3800

- ARRIVAL:** ATPIP THREE
- ALL RWYS:** From ATPIP track 319° to KASBU
Cross KASBU AT or BLW 5000FT
- Track 319° to AD VOR
 - Expect radar vectors to final approach

**COMMUNICATIONS FAILURE: PROCEDURE IN IMC
 IF ABLE CTC AD APP 03-9235-2012**

- Squawk 7600, comply with vertical navigation requirements, but not below MSA.
- Track via the latest STAR clearance to the nominated runway, then fly the most suitable approach in accordance with ERSA EMERG Section 1.5.