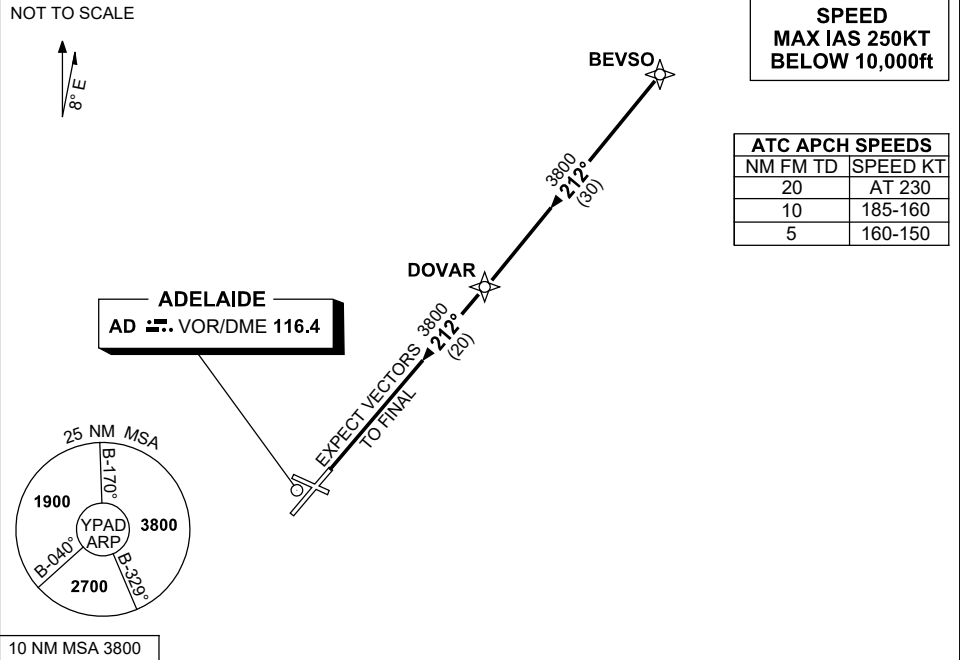


STANDARD INSTRUMENT ARRIVAL (STAR)  
BEVSO ONE ARRIVAL (NON-JET) (RNAV)  
**ADELAIDE, SA (YPAD)**

28 NOV 2024

ATIS 116.4 134.5	APP 118.2	TWR 120.5	SMC 121.7	Bearings are Magnetic Elevations in FEET AMSL
---------------------	--------------	--------------	--------------	--



**ARRIVAL:** BEVSO ONE

**ALL RWYS:** From BEVSO track 212° to DOVAR

- Track 212° to AD VOR
- Expect radar vectors to final approach

**COMMUNICATIONS FAILURE: PROCEDURE IN IMC**  
**IF ABLE CTC AD APP 03-9235-2012**

- Squawk 7600, comply with vertical navigation requirements, but not below MSA.
- Track via the latest STAR clearance to the nominated runway, then fly the most suitable approach in accordance with ERSa EMERG Section 1.5.