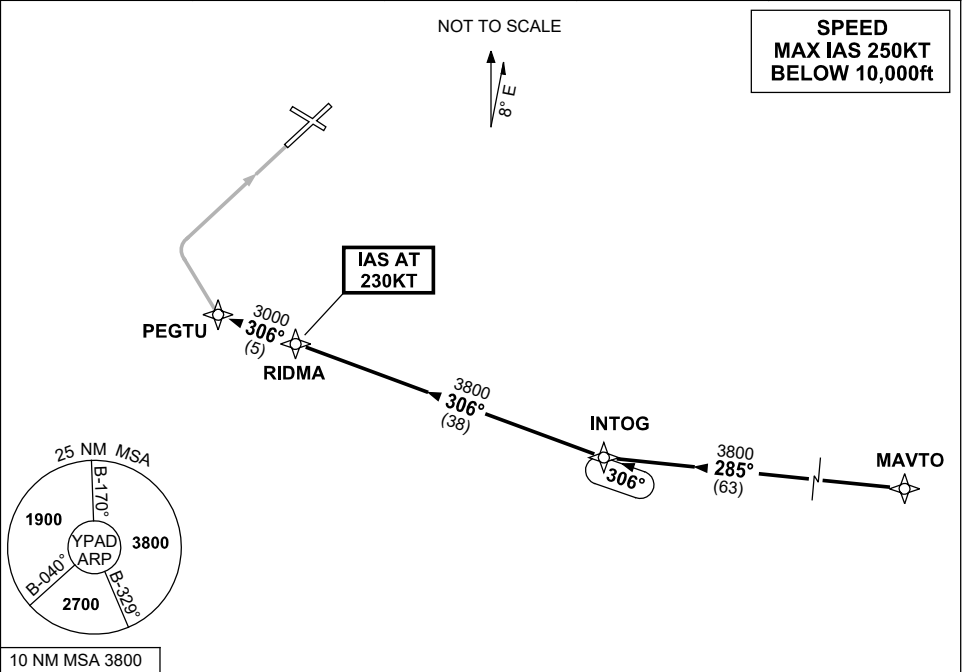


STANDARD INSTRUMENT ARRIVAL (STAR)  
INTOG ONE ZULU ARRIVAL (RNAV)  
ADELAIDE, SA (YPAD)

28 NOV 2024

ATIS 116.4 134.5	APP 118.2	TWR 120.5	SMC 121.7	Bearings are Magnetic Elevations in FEET AMSL
---------------------	--------------	--------------	--------------	--



**TRANSITION:**

**MAVTO:** From MAVTO track 285° to INTOG  
Then follow ARRIVAL instructions

**ARRIVAL: INTOG ONE**

**RWY 05 ZULU:**

- From INTOG turn RIGHT, track 306° to RIDMA  
IAS AT 230KT from RIDMA
- Track 306° to PEGTU
- Track via RNP Z RWY 05 APCH

**COMMUNICATIONS FAILURE: PROCEDURE IN IMC  
IF ABLE CTC AD APP 03-9235-2012**

- Squawk 7600, comply with vertical navigation requirements, but not below MSA.
- Track via the latest STAR clearance to the nominated runway, then fly the most suitable approach in accordance with ERS A EMERG Section 1.5.

Changes: WAYPOINT NAMES, PROC IDENT.

PADSR13-181