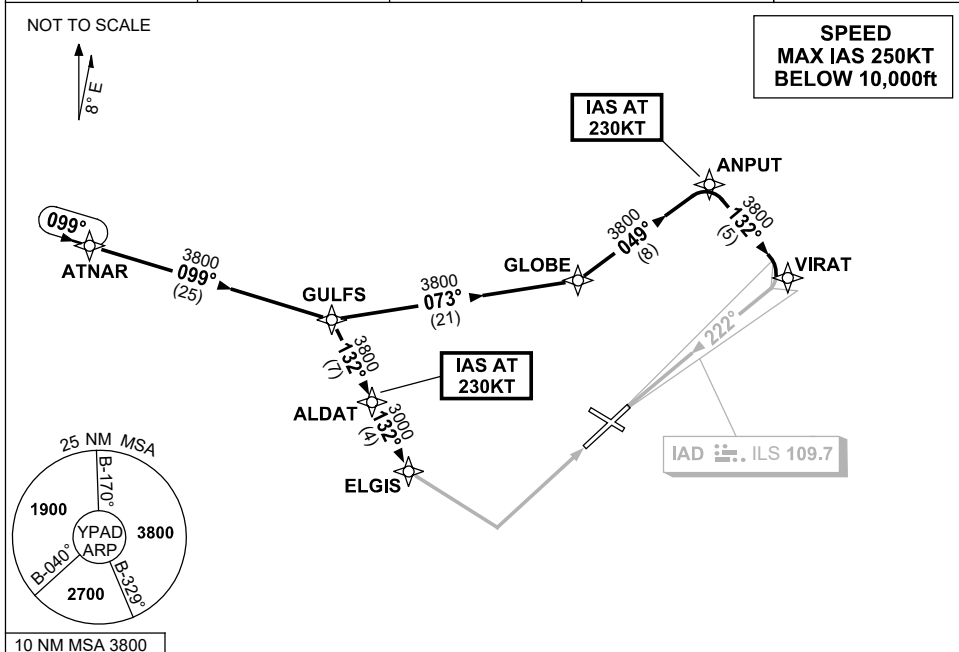


# STANDARD INSTRUMENT ARRIVAL (STAR) ATNAR ONE ALPHA, ZULU ARRIVALS (RNAV) ADELAIDE, SA (YPAD)

28 NOV 2024

ATIS 116.4 134.5	APP 124.2	TWR 120.5	SMC 121.7	Bearings are Magnetic Elevations in FEET AMSL
---------------------	--------------	--------------	--------------	--



## ARRIVAL: ATNAR ONE

### RWY 05 ZULU:

- Track 099° to GULFS
- Turn RIGHT, track 132° to ALDAT
- IAS AT 230KT from ALDAT
- Track 132° to ELGIS
- Track via RNP Z RWY 05

### RWY 23 ALPHA:

- Track 099° to GULFS
- Turn LEFT, track 073° to GLOBE
- Turn LEFT, track 049° to ANPUT
- IAS AT 230KT from ANPUT
- Turn RIGHT, track 132° to VIRAT
- Turn RIGHT, intercept LOC RWY 23

### RWY 23 ZULU:

- Track 099° to GULFS
- Turn LEFT, track 073° to GLOBE
- Turn LEFT, track 049° to ANPUT
- IAS AT 230KT from ANPUT
- Turn RIGHT, track 132° to VIRAT
- Track via RNP RWY 23

## COMMUNICATIONS FAILURE: PROCEDURE IN IMC IF ABLE CTC AD APP 03-9235-2012

- Squawk 7600, comply with vertical navigation requirements, but not below MSA.
- Track via the latest STAR clearance to the nominated runway, then fly the most suitable approach in accordance with ERSB EMERG Section 1.5.

Changes: WAYPOINT NAMES, PROC IDENT.

PADSR12-181