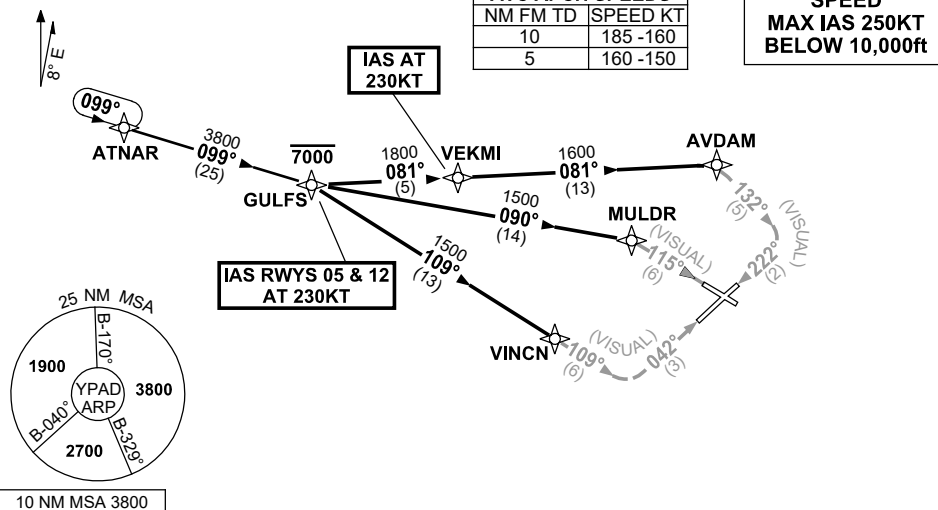


**STANDARD INSTRUMENT ARRIVAL (STAR)  
GULFS EIGHT VICTOR ARRIVAL (NON-JET) (RNAV)  
ADELAIDE, SA (YPAD)**

**28 NOV 2024**

ATIS 116.4 134.5	APP 124.2	TWR 120.5	SMC 121.7	Bearings are Magnetic Elevations in FEET AMSL
---------------------	--------------	--------------	--------------	--

NOT TO SCALE



**TRANSITIONS:**

**ATNAR:** From ATNAR to GULFS  
Track 099° to GULFS  
Then follow ARRIVAL instructions

**ARRIVAL:** **GULFS EIGHT**  
Cross GULFS AT or BLW 7000ft

**RWY 05 VICTOR:** **IAS AT 230KT** from GULFS  
From GULFS track 109° to VINCN  
• Track 109° VISUAL to intercept final RWY 05

**RWY 12 VICTOR:** **IAS AT 230KT** from GULFS  
From GULFS track 090° to MULDR  
• Turn RIGHT, track 115° VISUAL for final RWY 12

**RWY 23 VICTOR:** From GULFS track 081° to VEKMI  
**IAS AT 230KT** from VEKMI  
• Track 081° to AVDAM  
• Turn RIGHT, track 132° VISUAL to intercept final RWY 23

**NOTE:** When instrument APCH required, expect radar vectors after GULFS to IAF for appropriate instrument APCH.

**COMMUNICATIONS FAILURE: PROCEDURE IN IMC  
IF ABLE CTC AD APP 03-9235-2012**

- Squawk 7600, comply with vertical navigation requirements, but not below MSA.
- Track via the latest STAR clearance to the nominated runway, then fly the most suitable approach in accordance with ERSA EMERG Section 1.5.

Changes: WAYPOINT NAMES, VALIDITY INDICATOR.

PADSR07-181