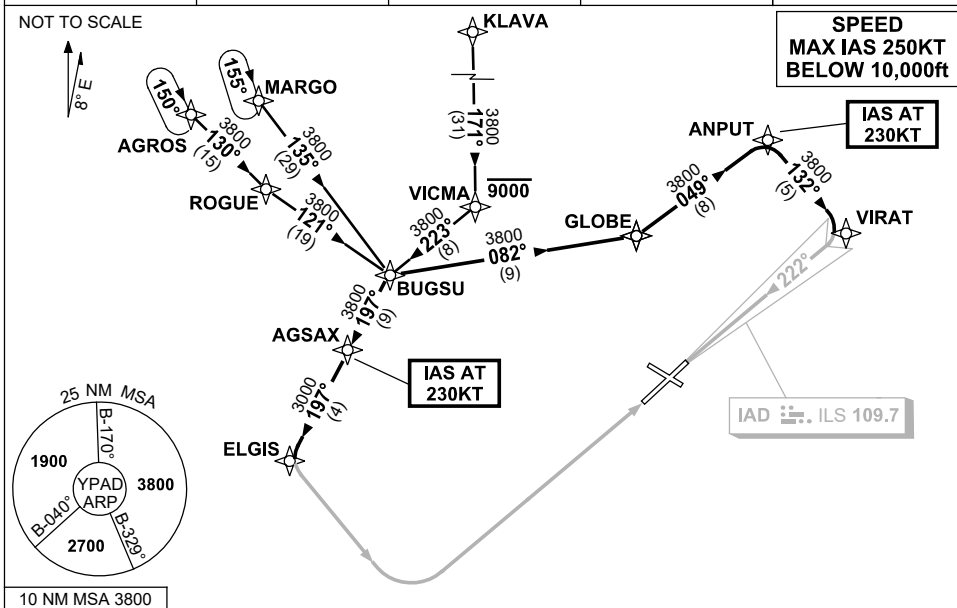


STANDARD INSTRUMENT ARRIVAL (STAR) BUGSU ONE ALPHA, ZULU ARRIVALS (RNAV) ADELAIDE, SA (YPAD)

28 NOV 2024

| | | | | |
|---------------------|--------------|--------------|--------------|--|
| ATIS 116.4 134.5 | APP 124.2 | TWR 120.5 | SMC 121.7 | Bearings are Magnetic Elevations in FEET AMSL |
|---------------------|--------------|--------------|--------------|--|



TRANSITIONS:

MARGO: From MARGO to BUGSU:
Track 135° to BUGSU
Then follow ARRIVAL instructions

KLAVA: From KLAVA to BUGSU:
(RWY 05 ONLY) Track 171° to VICMA
Cross VICMA AT or BLW 9000ft
Turn RIGHT, track 223° to BUGSU
Then follow ARRIVAL instructions

AGROS: From AGROS to BUGSU:
Track 130° to ROGUE
Turn LEFT, track 121° to BUGSU
Then follow ARRIVAL instructions

ARRIVAL: BUGSU ONE

RWY 05 ZULU:

- From BUGSU turn RIGHT, track 197° to AGSAX
IAS AT 230KT from AGSAX
- Track 197° to ELGIS
- Track via RNP Z RWY 05

RWY 23 ALPHA:

- From BUGSU turn LEFT, track 082° to GLOBE
- Turn LEFT, track 049° to ANPUT
IAS AT 230KT from ANPUT
- Turn RIGHT, track 132° to VIRAT
- Turn RIGHT, intercept LOC RWY 23

RWY 23 ZULU:

- From BUGSU turn LEFT, track 082° to GLOBE
- Turn LEFT, track 049° to ANPUT
IAS AT 230KT from ANPUT
- Turn RIGHT, track 132° to VIRAT
- Track via RNP RWY 23

COMMUNICATIONS FAILURE: PROCEDURE IN IMC IF ABLE CTC AD APP 03-9235-2012

- Squawk 7600, comply with vertical navigation requirements, but not below MSA.
- Track via the latest STAR clearance to the nominated runway, then fly the most suitable approach in accordance with ERSa EMERG Section 1.5.

Changes: WAYPOINT NAMES, PROC IDENT.

PADSR05-181