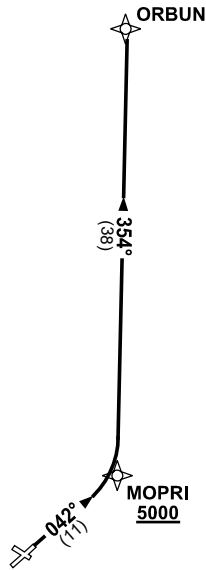


STANDARD INSTRUMENT DEPARTURES (SID)
ORBUN FIVE (JET) (RNAV)
ADELAIDE, SA (YPAD)

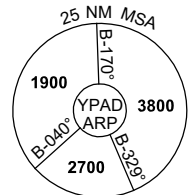
17 JUN 2021

ATIS 116.4 134.5	ACD 126.1	SMC 121.7	TWR 120.5	APP 124.2		Bearings are Magnetic Elevations in FEET AMSL
---------------------	--------------	--------------	--------------	--------------	--	--

NOT TO SCALE



SPEED
MAX IAS 250KT
BELOW 10,000FT



10 NM MSA 3800

ORBUN FIVE DEPARTURE

RWY 05

- GRAD 4.4% to 900FT thence 3.3%
- Track 042° to MOPRI
 Cross MOPRI AT or ABV 5000FT
- Turn **LEFT** track 354° to ORBUN,
 thence as cleared

Changes: Editorial.

PADDP05-167