

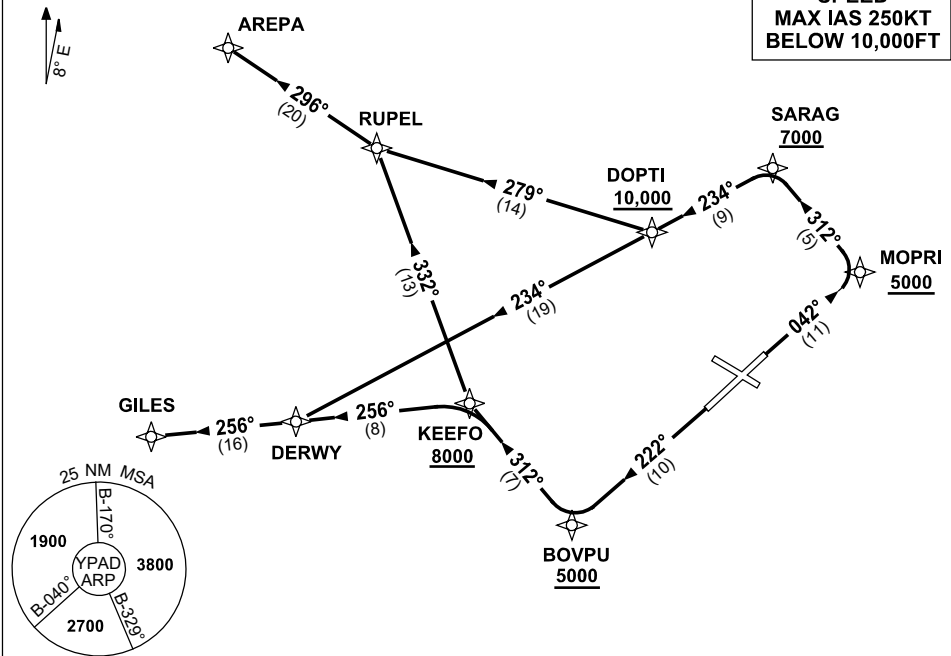
STANDARD INSTRUMENT DEPARTURES (SID)
RWYS WEST (JET) (RNAV)
ADELAIDE, SA (YPAD)

13 JUN 2024

ATIS 116.4 134.5	ACD 126.1	SMC 121.7	TWR 120.5	APP 124.2	Bearings are Magnetic Elevations in FEET AMSL
---------------------	--------------	--------------	--------------	--------------	--

NOT TO SCALE

SPEED
MAX IAS 250KT
BELOW 10,000FT



10 NM MSA 3800

AREPA ONE DEPARTURE
GILES FIVE DEPARTURE

RWY 05

- GRAD 4.4% to 900ft then 3.3%
- Track 042° to MOPRI
Cross MOPRI AT or ABV 5000ft
- Turn LEFT track 312° to SARAG
Cross SARAG AT or ABV 7000ft
- Turn LEFT track 234° to DOPTI
Cross DOPTI AT or ABV 10,000ft

For AREPA

- Turn RIGHT track 279° to RUPEL
- Turn RIGHT track 296° to AREPA, then as cleared

For GILES

- Track 234° to DERWY
- Turn RIGHT track 256° to GILES, then as cleared

RWY 23

- GRAD 4.7% to 3300ft then 3.3%
- Track 222° to BOVPU
Cross BOVPU AT or ABV 5000ft
- Turn RIGHT track 312° to KEEFO
Cross KEEFO AT or ABV 8000ft

For AREPA

- Turn RIGHT track 332° to RUPEL
- Turn LEFT track 296° to AREPA, then as cleared

For GILES

- Turn LEFT track 256° to DERWY
- Track 256° to GILES, then as cleared

Changes: AREPA, RUPEL, DOPTI, SARAG, BOVPU REPLACE HAWKY, BIGAL, PARKA, SALIS, CORNS, VALIDITY NUMBER.

PADDP04-179