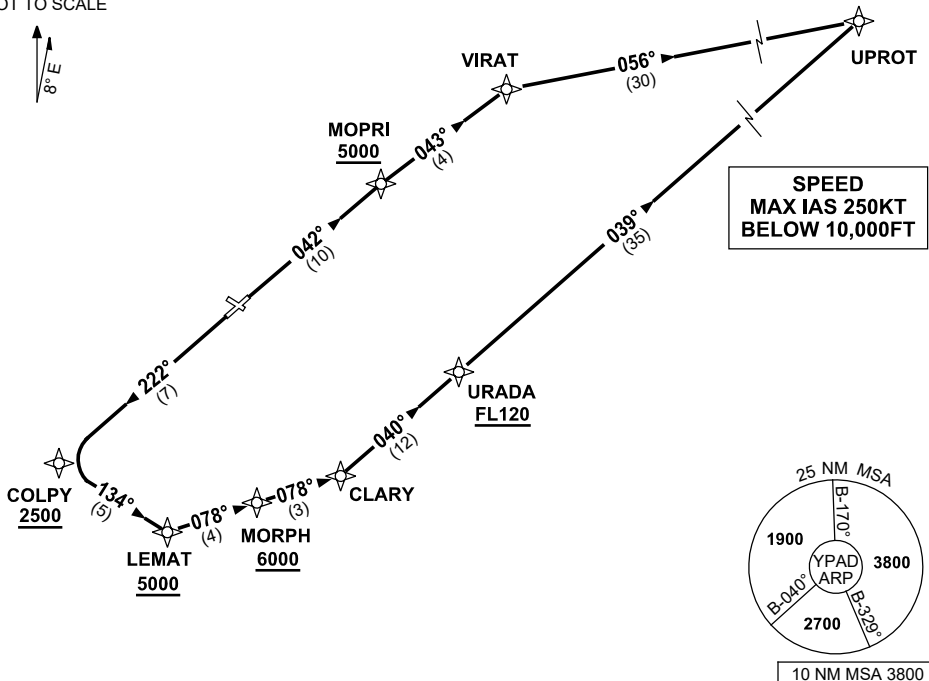


STANDARD INSTRUMENT DEPARTURES (SID)
UPROT TWO (JET) (RNAV)
ADELAIDE, SA (YPAD)

28 NOV 2024

ATIS 116.4 134.5	ACD 126.1	SMC 121.7	TWR 120.5	APP 118.2		Bearings are Magnetic Elevations in FEET AMSL
---------------------	--------------	--------------	--------------	--------------	--	--

NOT TO SCALE



UPROT TWO DEPARTURE

RWY 05

- GRAD 4.4% to 900ft then 3.3%
- Track 042° to MOPRI
Cross MOPRI AT or ABV 5000ft
- Track 043° to VIRAT
- Turn RIGHT track 056° to UPROT,
then as cleared

RWY 23

- GRAD 4.7% to 3300ft then 3.3%
- Track 222° to COLPY
Cross COLPY AT or ABV 2500ft
- Turn LEFT track 134° to LEMAT
Cross LEMAT AT or ABV 5000ft
- Turn LEFT track 078° to MORPH
Cross MORPH AT or ABV 6000ft
- Track 078° to CLARY,
- Turn LEFT track 040° to URADA,
Cross URADA AT or ABV FL120
- Track 039° to UPROT,
then as cleared

Changes: WAYPOINT NAMES, VALIDITY INDICATOR.

PADDP03-181