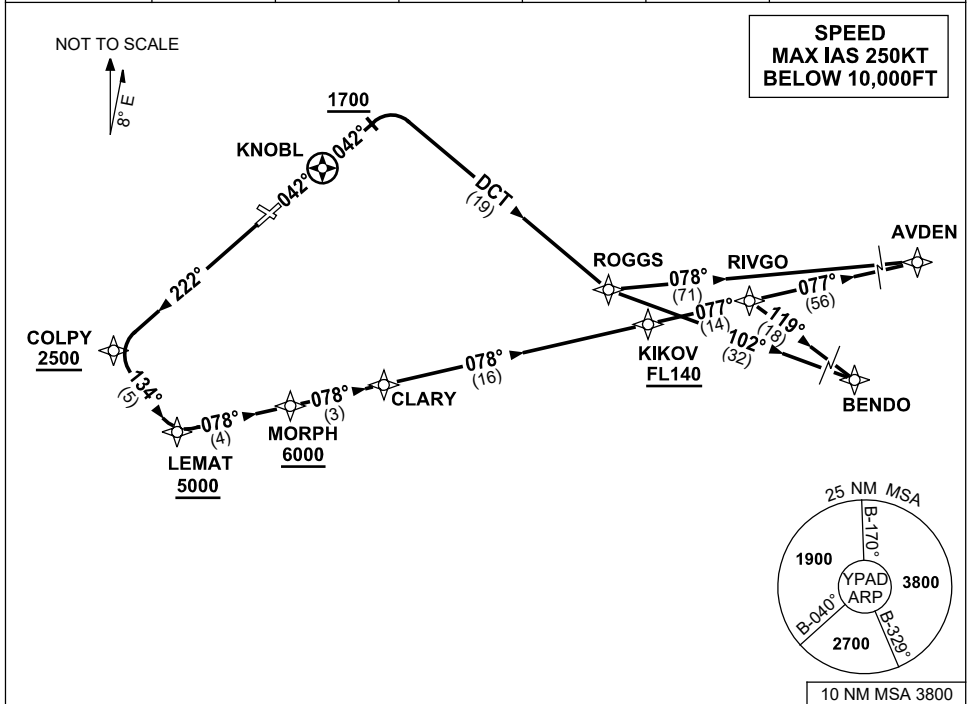


STANDARD INSTRUMENT DEPARTURES (SID)
RWYS EAST (JET) (RNAV)
ADELAIDE, SA (YPAD)

13 JUN 2024

ATIS 116.4 134.5	ACD 126.1	SMC 121.7	TWR 120.5	APP 118.2		Bearings are Magnetic Elevations in FEET AMSL
---------------------	--------------	--------------	--------------	--------------	--	--



AVDEN ONE DEPARTURE
BENDO THREE DEPARTURE

RWY 05

- GRAD 5.7% to 3300ft then 3.3%
- Track 042°
- After passing KNOBL **AND** 1700ft turn **RIGHT**
- Track DCT to ROGGS

For AVDEN

- From ROGGS turn **LEFT** track 078° to AVDEN, then as cleared

For BENDO

- From ROGGS turn as required, track 102° to BENDO, then as cleared

RWY 23

- GRAD 4.7% to 3300ft then 3.3%
- Track 222° to COLPY
- **Cross** COLPY AT or ABV 2500ft
- Turn **LEFT**, track 134° to LEMAT
- **Cross** LEMAT AT or ABV 5000ft
- Turn **LEFT**, track 078° to MORPH
- **Cross** MORPH AT or ABV 6000ft
- Track 078° to CLARY
- Track 078° to KIKOV
- **Cross** KIKOV AT or ABV FL140
- Track 077° to RIVGO

For AVDEN

- From RIVGO track 077° to AVDEN, then as cleared

For BENDO

- From RIVGO turn **RIGHT** track 119° to BENDO, then as cleared

Changes: AVDEN, RIVGO, KIKOV, LEMAT REPLACE PANKI, MURRY, BARKA, SULLY, VALIDITY NUMBER. PADDP02-179