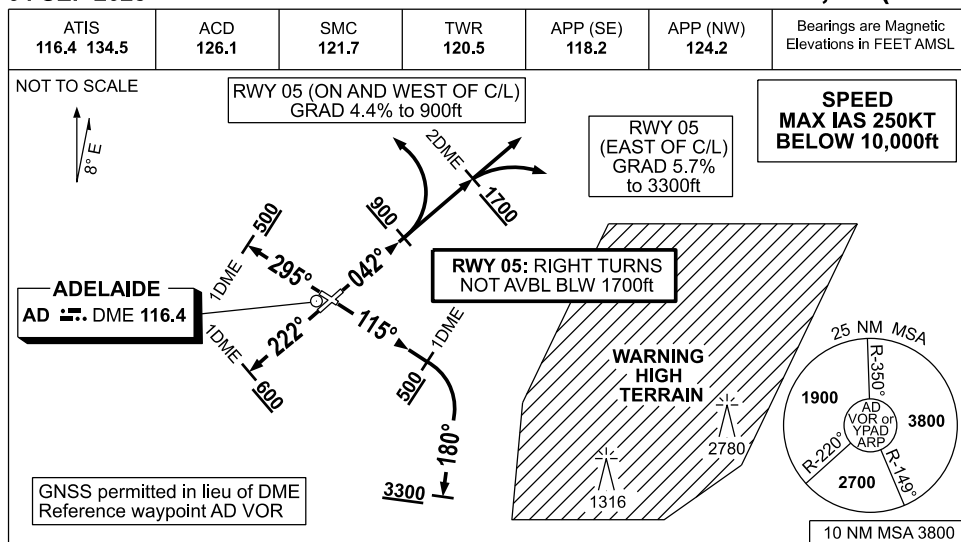


STANDARD INSTRUMENT DEPARTURES (SID) ADELAIDE FIVE DEPARTURE (RADAR) ADELAIDE, SA (YPAD)

04 SEP 2025



ADELAIDE FIVE DEPARTURE (RADAR)

- NOTE:**
1. FOR RWY 05 DEPS, ACFT WITH FLT PLAN TRACKS IN THE SECTOR 042° THROUGH WEST TO 219° CAN EXPECT A LEFT TURN.
 2. JETS DEPARTING FROM RWY 23/30 FOR TRACKS TO THE EAST OF ADELAIDE CAN EXPECT TO BE AT OR ABV 5000ft BY CROSSING R-185°AD or THE COAST EASTBOUND
 3. WHEN AD DME NOT AVBL, ON PILOT REQ APP WILL ADVISE PASSING DME DIST BASED ON RADAR OBS.

RWY 05 (DEPS EAST OF RWY C/L)

- GRAD 5.7% to 3300ft then 3.3%
- Track 042°
- AT or ABV 1700ft but not before 2 AD DME turn to assigned heading
RIGHT TURNS BLW 1700ft NOT AVBL

RWY 05 (DEPS ON & WEST OF RWY C/L)

- GRAD 4.4% to 900ft then 3.3%
- Track 042°
- AT or ABV 900ft turn LEFT to assigned heading or track

RWY 12 (MAX IAS 175KT until tracking 180°)

- GRAD 4.7% to 1500ft then 3.3%
- Track 115°
- AT or ABV 500ft but not before 1 AD DME turn RIGHT, track 180°
- AT or ABV 3300ft turn to assigned heading

RWY 23

- GRAD 4.7% to 3300ft then 3.3%
- Track 222°
- AT or ABV 600ft but not before 1 AD DME SW turn to assigned heading or track

RWY 30

- GRAD 4.7% to 3300ft then 3.3%
- Track 295°
- AT or ABV 500ft but not before 1 AD DME NW turn to assigned heading or track

COMMUNICATIONS FAILURE: PROCEDURE IN IMC IF ABLE CTC AD APP 03-9235-2012

On recognition of communication failure

- Squawk 7600
- Maintain last assigned vector for two minutes, and
- CLIMB IF NECESSARY TO MINIMUM SAFE ALTITUDE, to maintain terrain clearance, then
- proceed in accordance with the latest ATC route clearance acknowledged.

Changes: RWY 12 REVISED PROC, Editorial.

PADDP01-184