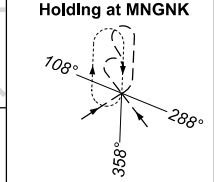
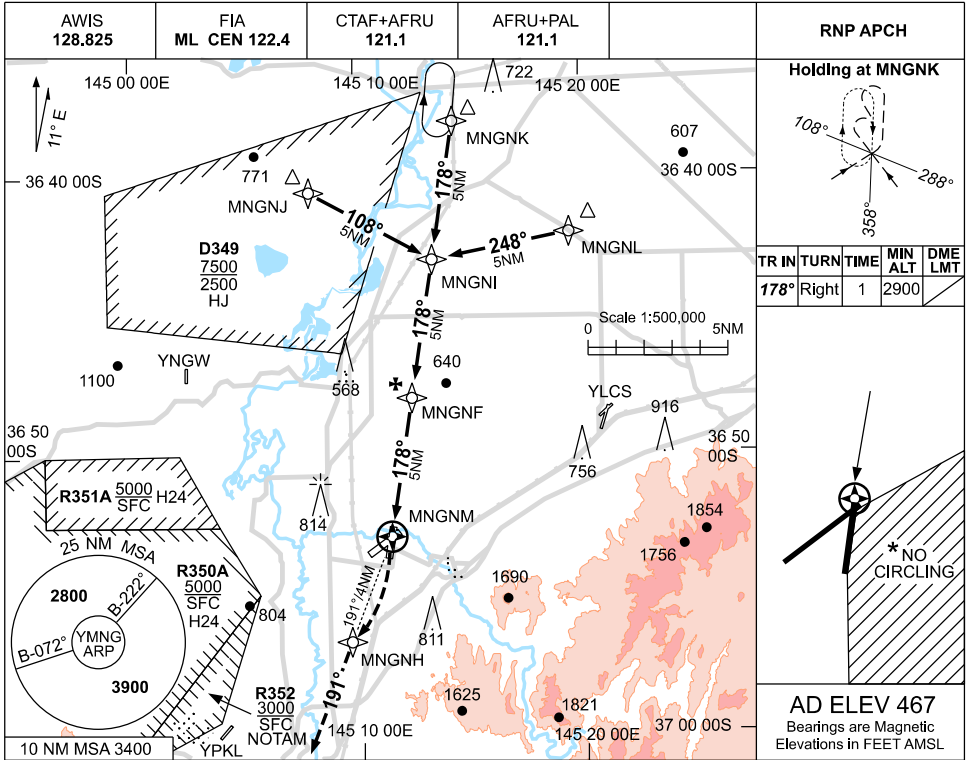


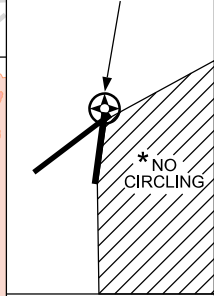
USE QNH

RNP RWY 18
MANGALORE, VIC (YMNG)

09 JUL 2026



| TR IN | TURN | TIME | MIN ALT | DME LMT |
|-------|-------|------|---------|---------|
| 178° | Right | 1 | 2900 | |

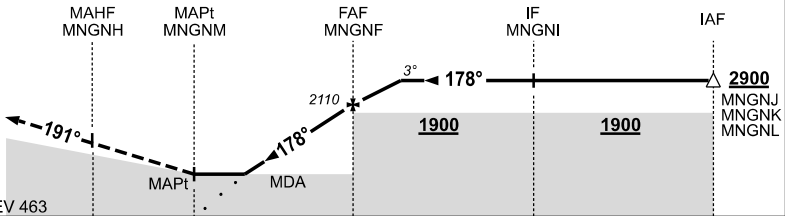


AD ELEV 467
Bearings are Magnetic
Elevations in FEET AMSL

| NM TO NEXT WPT | MNGNM | 1.5 | 2 | 3 | 4 | MNGNF | 1 | 2.5 | | | | |
|--------------------|-------|------|------|------|------|-------|------|-----|--|--|--|--|
| ALT (3° APCH PATH) | 990 | 1150 | 1470 | 1790 | 2110 | 2430 | 2900 | | | | | |

MISSED APPROACH:

TURN RIGHT
TRACK DCT TO MNGNH
THEN TRACK 191°
CLIMB TO 3900ft



NM TO MNGNM

NOTES

- MAX IAS:
INITIAL : 210KT
- NO CIRCLING IN
SECTOR SOUTH EAST
OF RWYS 18 / 36 AND
05 / 23.
- HOLD AREA OVERLAY
YSHT NDB-A
PRESCRIBED ALT
ENSURES SEPARATION.
- COLOUR: SEE SPEC
NOTICES.

| CATEGORY | A | B | C | D |
|------------|----------------|---|----------------|----------------|
| LNAV | 990 (523-2.9) | | | NOT APPLICABLE |
| CIRCLING * | 1320 (853-2.4) | | 1420 (953-4.0) | |
| ALTERNATE | (1353-4.4) | | (1453-6.0) | |

Changes: D343 REMOVED.

MNGGN02-187