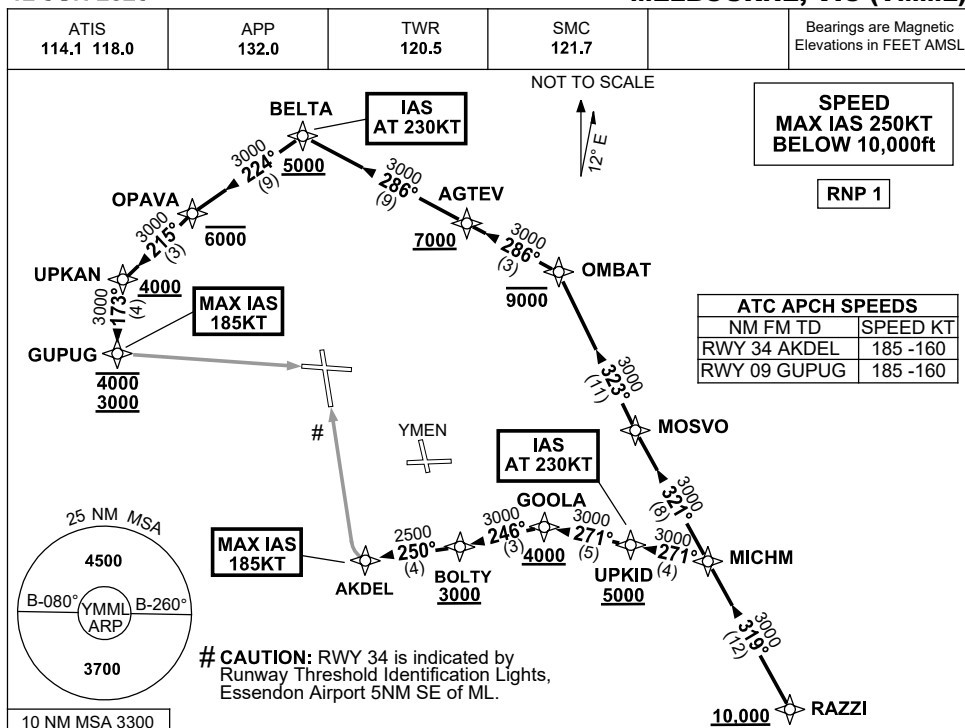


STANDARD INSTRUMENT ARRIVAL (STAR) RAZZI ONE ALPHA ARRIVAL (RNAV) RWY 09/34 MELBOURNE, VIC (YMML)

12 JUN 2025



ARRIVAL: RAZZI ONE ALPHA

RWY 09:

- **Cross** RAZZI AT or ABV 10,000ft
- From RAZZI, track 319° to MICHM
- Turn RIGHT, track 321° to MOSVO
- Turn RIGHT, track 323° to OMBAT
- **Cross** OMBAT AT or BLW 9000ft
- Turn LEFT, track 286° to AGTEV
- **Cross** AGTEV AT or ABV 7000ft
- Track 286° to BELTA
- **Cross** BELTA AT or ABV 5000ft
- **IAS AT 230KT** from BELTA
- Turn LEFT, track 224° to OPAVA
- **Cross** OPAVA AT or BLW 6000ft
- Turn LEFT, track 215° to UPKAN
- **Cross** UPKAN AT or ABV 4000ft
- Turn LEFT, track 173° to GUPUG
- **Cross** GUPUG BTN 3000ft and 4000ft
- **MAX IAS 185KT** from GUPUG
- Track via GLS RWY 09 or RNP RWY 09

RWY 34:

- **Cross** RAZZI AT or ABV 10,000ft
- From RAZZI, track 319° to MICHM
- Turn LEFT, track 271° to UPKID
- **Cross** UPKID AT or ABV 5000ft
- **IAS AT 230KT** from UPKID
- Track 271° to GOOLA
- **Cross** GOOLA AT or ABV 4000ft
- Turn LEFT, track 246° to BOLTY
- **Cross** BOLTY AT or ABV 3000ft
- Turn RIGHT, track 250° to AKDEL
- **MAX IAS 185KT** from AKDEL
- Track via GLS RWY 34 or RNP RWY 34

COMMUNICATIONS FAILURE: PROCEDURE IN IMC

- Squawk 7600, comply with vertical navigation requirements, but not below MSA.
- Track via the latest STAR clearance to the nominated runway, then fly the most suitable approach in accordance with ERSA EMERG Section 1.5.

Changes: WPT NAMES, PROC IDENT.

MMLSR26-183