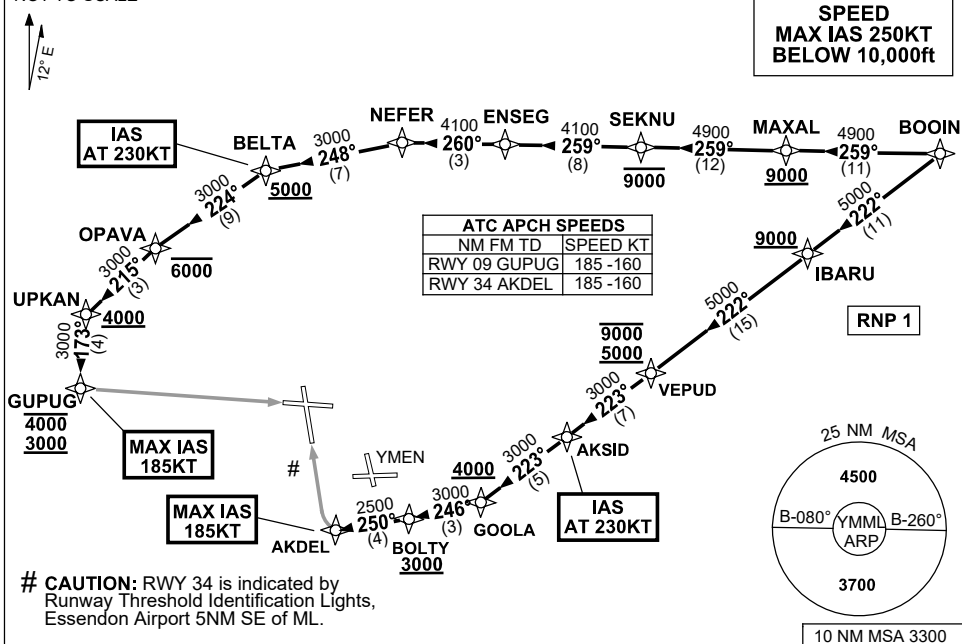


# STANDARD INSTRUMENT ARRIVAL (STAR) BOOIN ONE ALPHA ARRIVAL (RNAV) RWY 09/34 MELBOURNE, VIC (YMML)

12 JUN 2025

ATIS 114.1 118.0	APP 132.0	TWR 120.5	SMC 121.7	Bearings are Magnetic Elevations in FEET AMSL
---------------------	--------------	--------------	--------------	--------------------------------------------------

NOT TO SCALE



## ARRIVAL: BOOIN ONE ALPHA

### RWY 09:

- From BOOIN, track 259° to MAXAL  
**Cross** MAXAL AT or ABV 9000ft
- Track 259° to SEKNU  
**Cross** SEKNU AT or BLW 9000ft
- Turn RIGHT, track 259° to ENSEG
- Track 260° to NEFER
- Turn LEFT, track 248° to BELTA  
**Cross** BELTA AT or ABV 5000ft  
**IAS AT 230KT** from BELTA
- Turn LEFT, track 224° to OPAVA  
**Cross** OPAVA AT or BLW 6000ft
- Turn LEFT, track 215° to UPKAN  
**Cross** UPKAN AT or ABV 4000ft
- Turn LEFT, track 173° to GUPUG  
**Cross** GUPUG BTN 3000ft and 4000ft  
**MAX IAS 185KT** from GUPUG
- Track via GLS RWY 09 or RNP RWY 09

### RWY 34:

- From BOOIN, track 222° to IBARU  
**Cross** IBARU AT or ABV 9000ft
- Track 222° to VEPUD  
**Cross** VEPUD BTN 5000ft and 9000ft
- Track 223° to AKSID  
**IAS AT 230KT** from AKSID
- Track 223° to GOOLA  
**Cross** GOOLA AT or ABV 4000ft
- Turn RIGHT, track 246° to BOLTY  
**Cross** BOLTY AT or ABV 3000ft
- Turn RIGHT, track 250° to AKDEL  
**MAX IAS 185KT** from AKDEL
- Track via GLS RWY 34 or RNP RWY 34

## COMMUNICATIONS FAILURE: PROCEDURE IN IMC

- Squawk 7600, comply with vertical navigation requirements, but not below MSA.
- Track via the latest STAR clearance to the nominated runway, then fly the most suitable approach in accordance with ERSa EMERG Section 1.5.

Changes: WPT NAMES, PROC IDENT.

MMLSR25-183