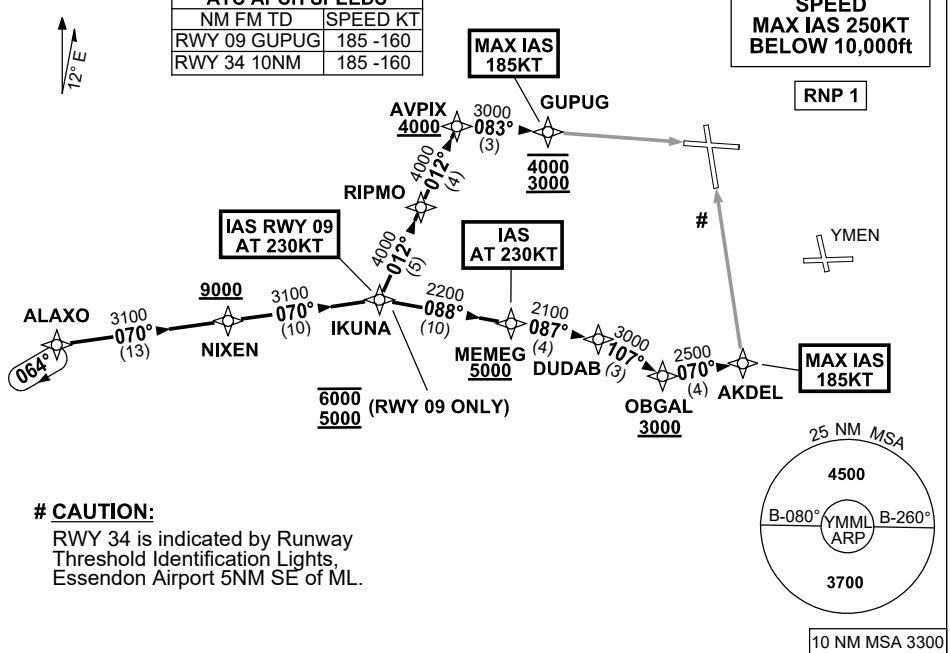


**STANDARD INSTRUMENT ARRIVAL (STAR)
ALAXO ONE ALPHA ARRIVAL (RNAV) RWY 09/34
MELBOURNE, VIC (YMML)**

12 JUN 2025

ATIS 114.1 118.0	APP 129.4 132.0	TWR 120.5	SMC 121.7	Bearings are Magnetic Elevations in FEET AMSL
---------------------	--------------------	--------------	--------------	--

NOT TO SCALE



ARRIVAL: ALAXO ONE ALPHA

RWY 09:

- From ALAXO, track 070° to NIXEN
Cross NIXEN AT or ABV 9000ft
- Track 070° to IKUNA
Cross IKUNA BTN 5000ft and 6000ft
IAS AT 230KT from IKUNA
- From IKUNA, turn LEFT, track 012° to RIPMO
- Track 012° to AVPIX
Cross AVPIX AT or ABV 4000ft
- Turn RIGHT, track 083° to GUPUG
Cross GUPUG BTN 3000ft and 4000ft
MAX IAS 185KT from GUPUG
- Track via GLS RWY 09 or RNP RWY 09

RWY 34:

- From ALAXO, track 070° to NIXEN
Cross NIXEN AT or ABV 9000ft
- Track 070° to IKUNA
- Turn RIGHT, track 088° to MEMEG
Cross MEMEG AT or ABV 5000ft
IAS AT 230KT from MEMEG
- Track 087° to DUDAB
- Turn RIGHT, track 107° to OBGAL
Cross OBGAL AT or ABV 3000ft
- Turn LEFT, track 070° to AKDEL
MAX IAS 185KT from AKDEL
- Track via GLS RWY 34 or RNP RWY 34

COMMUNICATIONS FAILURE: PROCEDURE IN IMC

- Squawk 7600, comply with vertical navigation requirements, but not below MSA.
- Track via the latest STAR clearance to the nominated runway, then fly the most suitable approach in accordance with ERSA EMERG Section 1.5.

Changes: WPT NAMES, PROC IDENT.

MMLSR22-183