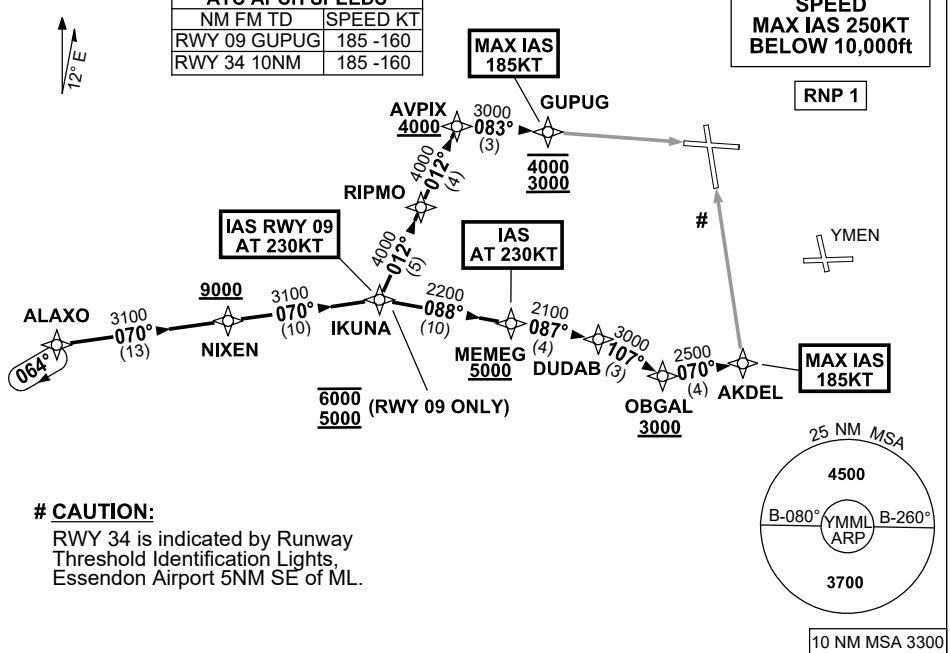


# STANDARD INSTRUMENT ARRIVAL (STAR) ALAXO ONE ALPHA ARRIVAL (RNAV) RWY 09/34 MELBOURNE, VIC (YMLL)

12 JUN 2025

ATIS 114.1 118.0	APP 129.4 132.0	TWR 120.5	SMC 121.7	Bearings are Magnetic Elevations in FEET AMSL
---------------------	--------------------	--------------	--------------	--

NOT TO SCALE



## ARRIVAL: ALAXO ONE ALPHA

### RWY 09:

- From ALAXO, track 070° to NIXEN  
**Cross** NIXEN AT or ABV 9000ft
- Track 070° to IKUNA  
**Cross** IKUNA BTN 5000ft and 6000ft  
**IAS AT 230KT** from IKUNA
- From IKUNA, turn LEFT, track 012° to RIPMO
- Track 012° to AVPIX  
**Cross** AVPIX AT or ABV 4000ft
- Turn RIGHT, track 083° to GUPUG  
**Cross** GUPUG BTN 3000ft and 4000ft  
**MAX IAS 185KT** from GUPUG
- Track via GLS RWY 09 or RNP RWY 09

### RWY 34:

- From ALAXO, track 070° to NIXEN  
**Cross** NIXEN AT or ABV 9000ft
- Track 070° to IKUNA
- Turn RIGHT, track 088° to MEMEG  
**Cross** MEMEG AT or ABV 5000ft  
**IAS AT 230KT** from MEMEG
- Track 087° to DUDAB
- Turn RIGHT, track 107° to OBGAL  
**Cross** OBGAL AT or ABV 3000ft
- Turn LEFT, track 070° to AKDEL  
**MAX IAS 185KT** from AKDEL
- Track via GLS RWY 34 or RNP RWY 34

## COMMUNICATIONS FAILURE: PROCEDURE IN IMC

- Squawk 7600, comply with vertical navigation requirements, but not below MSA.
- Track via the latest STAR clearance to the nominated runway, then fly the most suitable approach in accordance with ERSA EMERG Section 1.5.

Changes: WPT NAMES, PROC IDENT.

MMLSR22-183