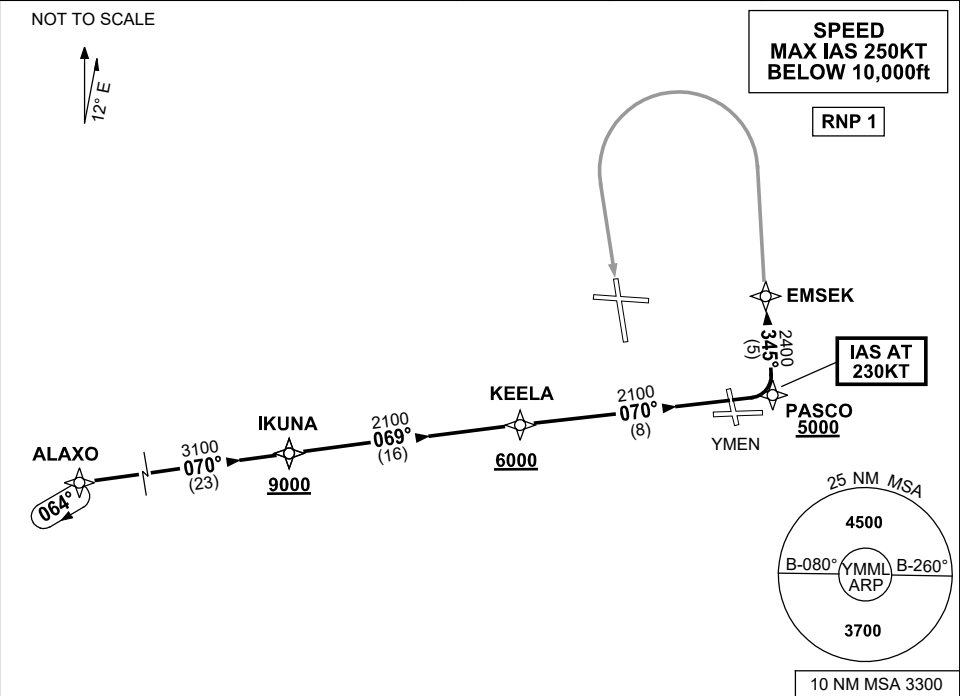


STANDARD INSTRUMENT ARRIVAL (STAR)
ALAXO ONE PAPA ARRIVAL (RNAV)
MELBOURNE, VIC (YMML)

12 JUN 2025

ATIS 114.1 118.0	APP 129.4 132.0	TWR 120.5	SMC 121.7		Bearings are Magnetic Elevations in FEET AMSL
---------------------	--------------------	--------------	--------------	--	--



ARRIVAL: ALAXO ONE PAPA

RWY 16 :

- From ALAXO, track 070° to IKUNA
Cross IKUNA AT or ABV 9000ft
- From IKUNA turn LEFT, track 069° to KEELA
Cross KEELA AT or ABV 6000ft
- Track 070° to PASCO
Cross PASCO AT or ABV 5000ft
IAS AT 230KT from PASCO
- Turn LEFT, track 345° to EMSEK
- Track via RNP P RWY 16 (AR)

COMMUNICATIONS FAILURE: PROCEDURE IN IMC

- Squawk 7600, comply with vertical navigation requirements, but not below MSA.
- Track via the latest STAR clearance to the nominated runway, then fly the most suitable approach in accordance with ERSA EMERG Section 1.5.

Changes: WPT NAMES, PROC IDENT. MMLSR21-183