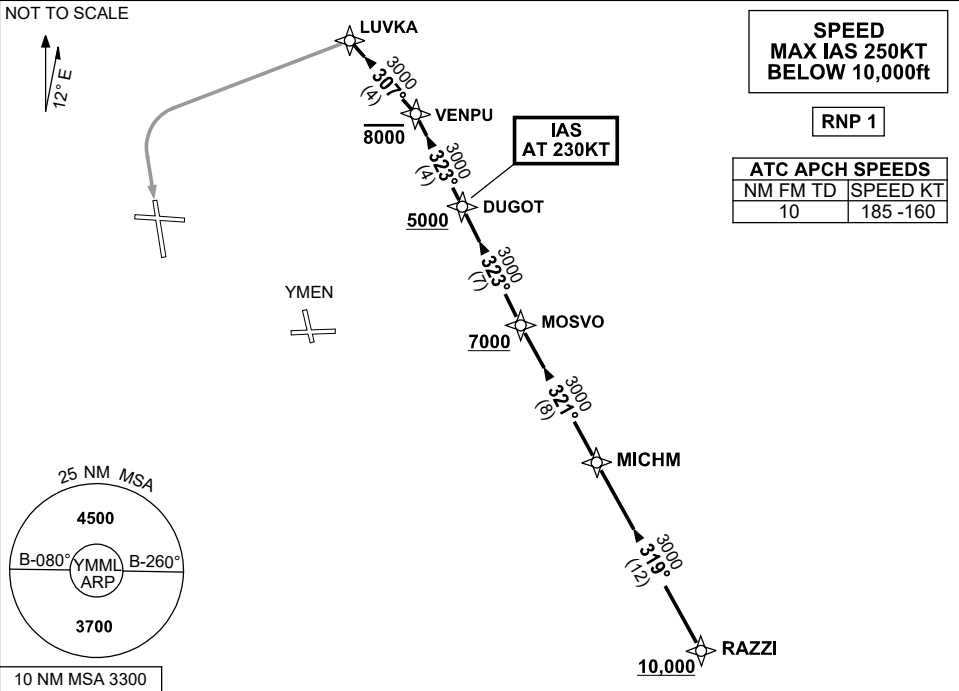


STANDARD INSTRUMENT ARRIVAL (STAR)
RAZZI ONE MIKE ARRIVAL (RNAV)
MELBOURNE, VIC (YMML)

12 JUN 2025

ATIS 114.1 118.0	APP 132.0	TWR 120.5	SMC 121.7		Bearings are Magnetic. Elevations in FEET AMSL
---------------------	--------------	--------------	--------------	--	---



ARRIVAL: RAZZI ONE MIKE

Cross RAZZI AT or ABV 10,000ft, then:

RWY 16:

- From RAZZI track 319° to MICHM
- Turn RIGHT, track 321° to MOSVO
Cross MOSVO AT or ABV 7000ft
- Turn RIGHT, track 323° to DUGOT
Cross DUGOT AT or ABV 5000ft
IAS AT 230KT from DUGOT
- Track 323° to VENPU
Cross VENPU AT or BLW 8000ft
- Turn LEFT, track 307° to LUVKA
- Turn LEFT, track via RNP M RWY 16 (AR)

COMMUNICATIONS FAILURE: PROCEDURE IN IMC

- Squawk 7600, comply with vertical navigation requirements, but not below MSA.
- Track via the latest STAR clearance to the nominated runway, then fly the most suitable approach in accordance with ERSA EMERG Section 1.5.

Changes: WPT NAMES, PROC IDENT.

MMLSR13-183