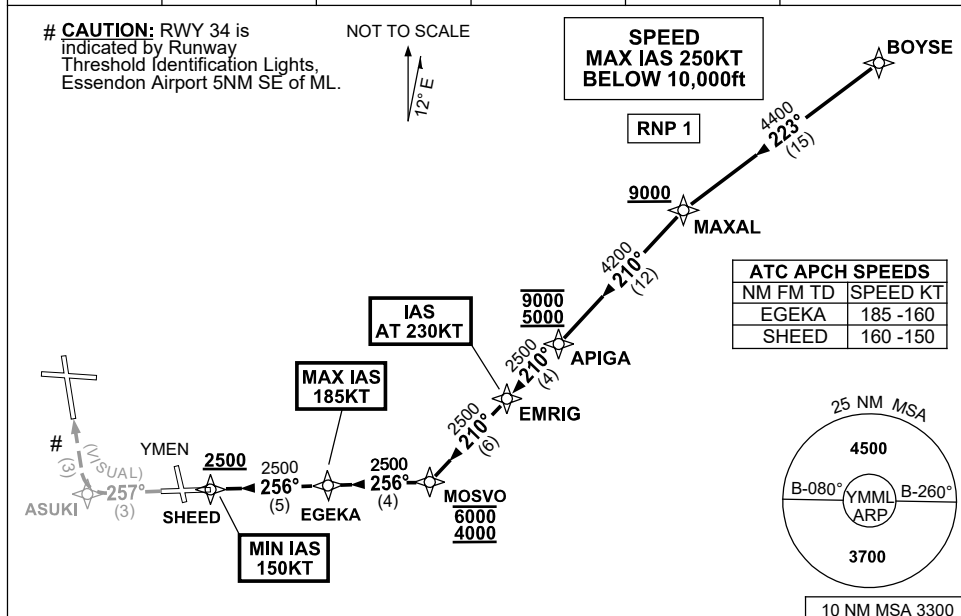


STANDARD INSTRUMENT ARRIVAL (STAR) BOYSE NINE VICTOR ARRIVAL (NON-JET) (RNAV) MELBOURNE, VIC (YMML)

04 SEP 2025

ATIS 114.1 118.0	APP 132.0	TWR 120.5	SMC 121.7		Bearings are Magnetic Elevations in FEET AMSL
---------------------	--------------	--------------	--------------	--	--------------------------------------------------



ARRIVAL: BOYSE NINE VICTOR (NON-JET)

RWY 34 :

- From BOYSE track 223° to MAXAL
Cross MAXAL AT or ABV 9000ft
- Turn LEFT, track 210° to APIGA
Cross APIGA BTN 5000ft and 9000ft
- Track 210° to EMRIG
IAS AT 230KT from EMRIG
- Track 210° to MOSVO
Cross MOSVO BTN 4000ft and 6000ft
- Turn RIGHT, track 256° to EGEKA
MAX IAS 185KT from EGEKA
- Track 256° to SHEED
Cross SHEED AT or ABV 2500ft
MIN IAS 150KT from SHEED
- Track 257° VISUAL to ASUKI
- Turn RIGHT for VISUAL intercept of final RWY 34

COMMUNICATIONS FAILURE: PROCEDURE IN IMC

- Squawk 7600, comply with vertical navigation requirements, but not below MSA.
- Track via the latest STAR clearance to the nominated runway, then fly the most suitable approach in accordance with ERSA EMERG Section 1.5.

Changes: MAGNETIC BEARINGS.

MMLSR09-184