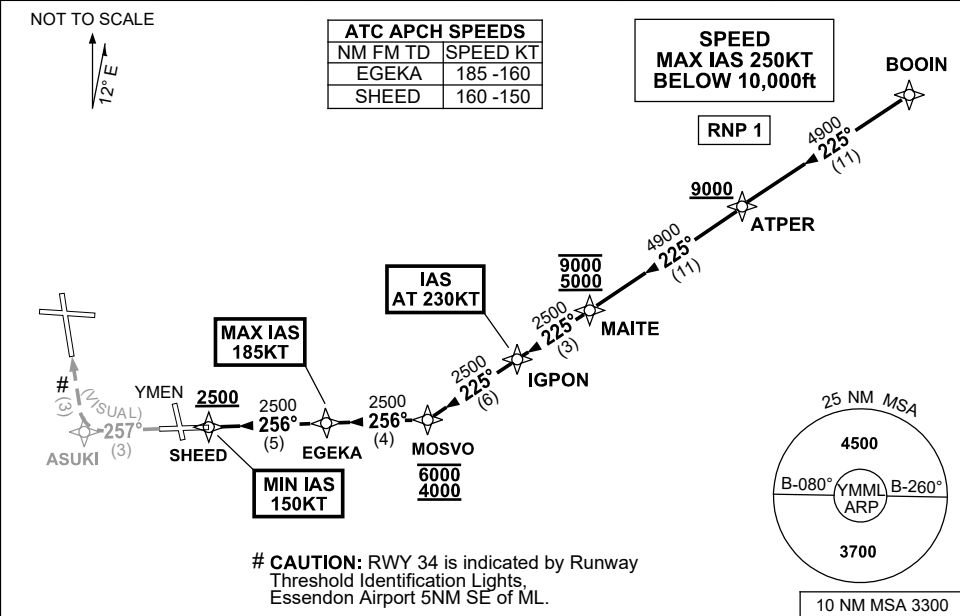


STANDARD INSTRUMENT ARRIVAL (STAR)  
BOOIN ONE VICTOR ARRIVAL (RNAV)  
MELBOURNE, VIC (YMML)

04 SEP 2025

ATIS 114.1 118.0	APP 132.0	TWR 120.5	SMC 121.7		Bearings are Magnetic Elevations in FEET AMSL
---------------------	--------------	--------------	--------------	--	--



**ARRIVAL: BOOIN ONE VICTOR**

**RWY 34 :**

- From BOOIN track 225° to ATPER  
**Cross** ATPER AT or ABV 9000ft
- Track 225° to MAITE  
**Cross** MAITE BTN 5000ft and 9000ft
- Track 225° to IGPON  
**IAS AT 230KT** from IGPON
- Track 225° to MOSVO  
**Cross** MOSVO BTN 4000ft and 6000ft
- Turn RIGHT, track 256° to EGEKA  
MAX IAS 185KT from EGEKA
- Track 256° to SHEED  
**Cross** SHEED AT or ABV 2500ft  
MIN IAS 150KT from SHEED
- Track 257° VISUAL to ASUKI
- Turn RIGHT for VISUAL intercept  
of final RWY 34

**COMMUNICATIONS FAILURE: PROCEDURE IN IMC**

- Squawk 7600, comply with vertical navigation requirements, but not below MSA.
- Track via the latest STAR clearance to the nominated runway, then fly the most suitable approach in accordance with ERSA EMERG Section 1.5.

Changes: MAGNETIC BEARINGS, SEGMENT DISTANCE.

MMLSR08-184