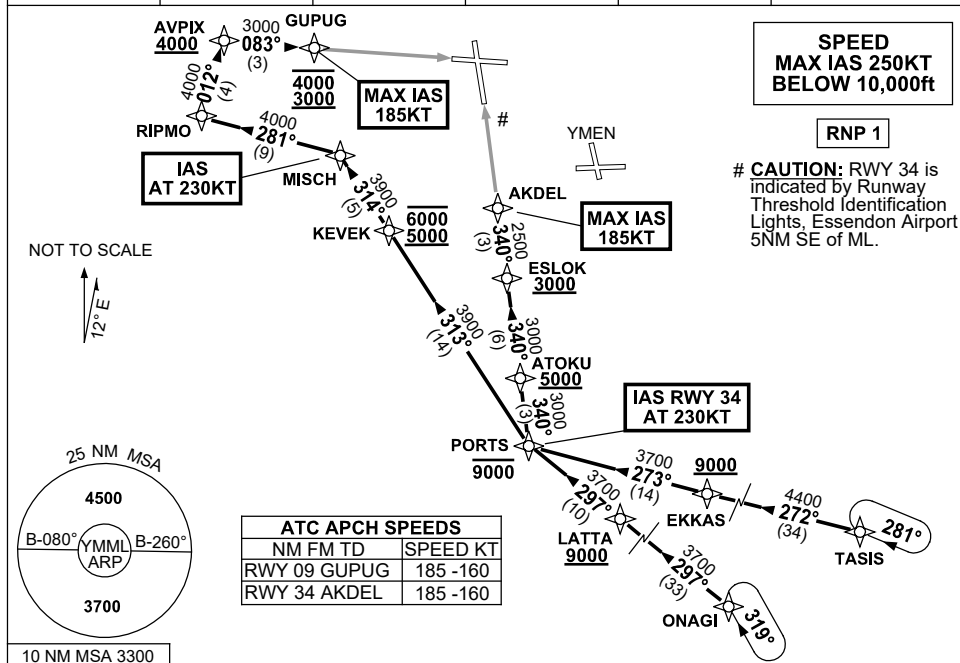


# STANDARD INSTRUMENT ARRIVAL (STAR) PORTS EIGHT ALPHA ARRIVAL (RNAV) MELBOURNE, VIC (YMML)

04 SEP 2025

ATIS 114.1 118.0	APP/DEP 129.4	TWR 120.5	SMC 121.7	Bearings are Magnetic Elevations in FEET AMSL
---------------------	------------------	--------------	--------------	--



## TRANSITIONS:

### TASIS: From TASIS to PORTS:

- Track 272° to EKKAS  
**Cross** EKKAS AT or ABV 9000ft
- Track 273° to PORTS  
**Cross** PORTS AT or BLW 9000ft
- Then follow ARRIVAL instruction

### ONAGI: From ONAGI to PORTS:

- Track 297° to LATTA  
**Cross** LATTA AT or ABV 9000ft
- Track 297° to PORTS  
**Cross** PORTS AT or BLW 9000ft
- Then follow ARRIVAL instruction

## ARRIVAL: PORTS EIGHT ALPHA

### RWY 09: From PORTS:

- Turn RIGHT, track 313° to KEVEK  
**Cross** KEVEK BTN 5000ft and 6000ft
- Track 314° to MISCH  
**IAS AT 230KT** from MISCH
- Turn LEFT, track 281° to RIPMO
- Turn RIGHT, track 012° to AVPIX  
**Cross** AVPIX AT or ABV 4000ft
- Turn RIGHT, track 083° to GUPUG  
**Cross** GUPUG BTN 3000ft and 4000ft  
**MAX IAS 185KT** from GUPUG
- Track via GLS RWY 09 or RNP RWY 09

### RWY 34: From PORTS:

- IAS AT 230KT** from PORTS
- Turn RIGHT, track 340° to ATOKU  
**Cross** ATOKU AT or ABV 5000ft
- Track 340° to ESLOK  
**Cross** ESLOK AT or ABV 3000ft
- Track 340° to AKDEL  
**MAX IAS 185KT** from AKDEL
- Track via GLS RWY 34 or RNP RWY 34

## COMMUNICATIONS FAILURE: PROCEDURE IN IMC

- Squawk 7600, comply with vertical navigation requirements, but not below MSA.
- Track via the latest STAR clearance to the nominated runway, then fly the most suitable approach in accordance with ERSA EMERG Section 1.5.

Changes: MAGNETIC BEARINGS.

MMLSR03-184