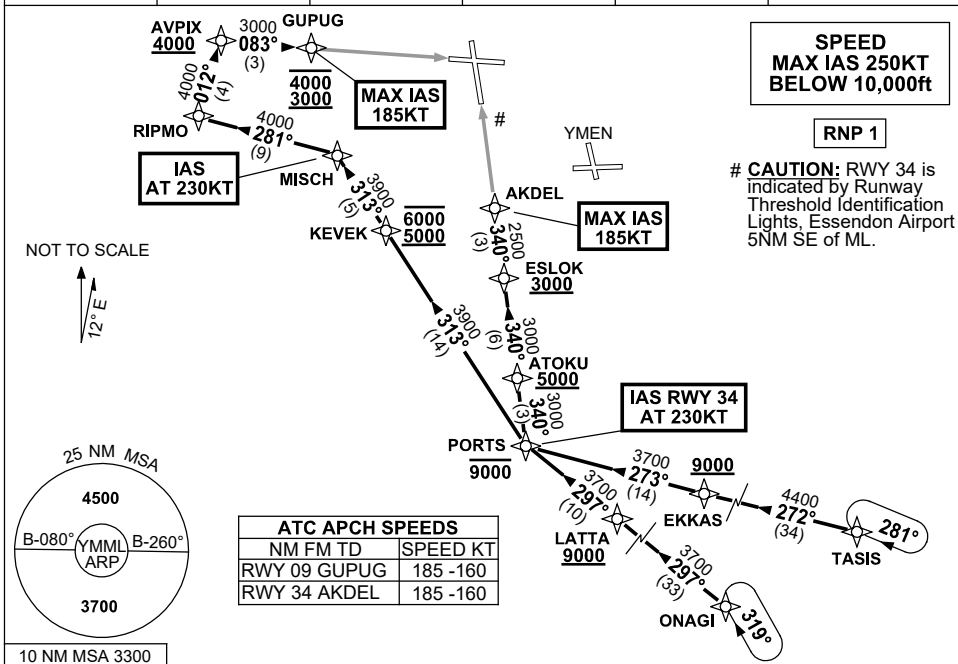


STANDARD INSTRUMENT ARRIVAL (STAR) PORTS EIGHT ALPHA ARRIVAL (RNAV) MELBOURNE, VIC (YMML)

12 JUN 2025

ATIS 114.1 118.0	APP/DEP 129.4	TWR 120.5	SMC 121.7	Bearings are Magnetic Elevations in FEET AMSL
---------------------	------------------	--------------	--------------	--



TRANSITIONS:

TASIS: From TASIS to PORTS:

- Track 272° to EKKAS
Cross EKKAS AT or ABV 9000ft
- Track 273° to PORTS
Cross PORTS AT or BLW 9000ft
- Then follow ARRIVAL instruction

ONAGI: From ONAGI to PORTS:

- Track 297° to LATTA
Cross LATTA AT or ABV 9000ft
- Track 297° to PORTS
Cross PORTS AT or BLW 9000ft
- Then follow ARRIVAL instruction

ARRIVAL: PORTS EIGHT ALPHA

RWY 09: From PORTS:

- Turn RIGHT, track 313° to KEVEK
Cross KEVEK BTN 5000ft and 6000ft
- Track 313° to MISCH
IAS AT 230KT from MISCH
- Turn LEFT, track 281° to RIPMO
- Turn RIGHT, track 012° to AVPIX
Cross AVPIX AT or ABV 4000ft
- Turn RIGHT, track 083° to GUPUG
Cross GUPUG BTN 3000ft and 4000ft
MAX IAS 185KT from GUPUG
- Track via GLS RWY 09 or RNP RWY 09

RWY 34: From PORTS:

- IAS AT 230KT** from PORTS
- Turn RIGHT, track 340° to ATOKU
Cross ATOKU AT or ABV 5000ft
- Track 340° to ESLOK
Cross ESLOK AT or ABV 3000ft
- Track 340° to AKDEL
MAX IAS 185KT from AKDEL
- Track via GLS RWY 34 or RNP RWY 34

COMMUNICATIONS FAILURE: PROCEDURE IN IMC

- Squawk 7600, comply with vertical navigation requirements, but not below MSA.
- Track via the latest STAR clearance to the nominated runway, then fly the most suitable approach in accordance with ERSA EMERG Section 1.5.

Changes: WPT NAME, VALIDITY INDICATOR.

MMLSR03-183