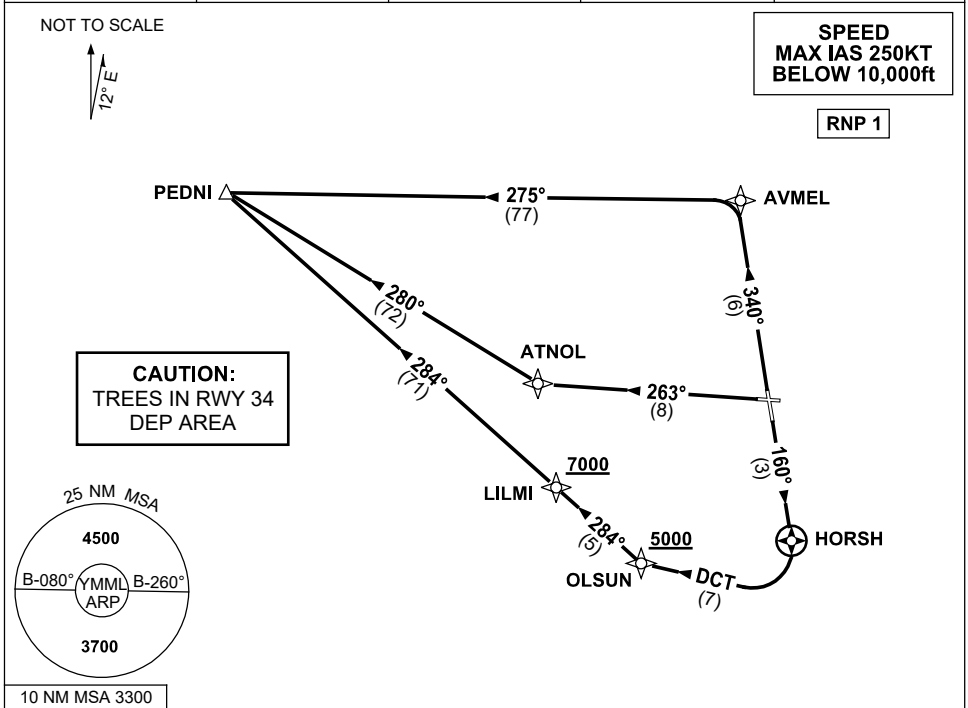


STANDARD INSTRUMENT DEPARTURES (SID)  
 PEDNI ONE (JET)(RNAV)  
 MELBOURNE, VIC (YMML)

04 SEP 2025

ATIS 114.1 118.0	ACD 127.2	SMC 121.7	TWR 120.5	DEP 118.9
---------------------	--------------	--------------	--------------	--------------



## PEDNI ONE DEPARTURE

### RWY 16

- GRAD 3.3%
- Track 160° to HORSH
- Turn RIGHT, track DCT to OLSUN  
**Cross** OLSUN AT or ABV 5000ft  
(RQ GRAD TO OLSUN 8.5%)
- Turn RIGHT, track 284° to LILMI  
**Cross** LILMI AT or ABV 7000ft  
(RQ GRAD TO LILMI 7.4%)
- Track 284° to PEDNI, then as cleared

### RWY 27

- GRAD 3.3%
- Track 263° to ATNOL
- Turn RIGHT, track 280° to PEDNI,  
then as cleared

### RWY 34

- GRAD 3.5% to 1200ft then 3.3%
- Track 340° to AVMEL
- Turn LEFT, track 275° to PEDNI,  
then as cleared

Changes: MAGNETIC BEARINGS.

MMLDP32-184