

STANDARD INSTRUMENT DEPARTURES (SID)  
CORRS ONE (JET)(RNAV)  
MELBOURNE, VIC (YMML)

04 SEP 2025

ATIS 114.1 118.0	ACD 127.2	SMC 121.7	TWR 120.5	DEP RWY 16 & 27 129.4 RWY 34 118.9
---------------------	--------------	--------------	--------------	------------------------------------------

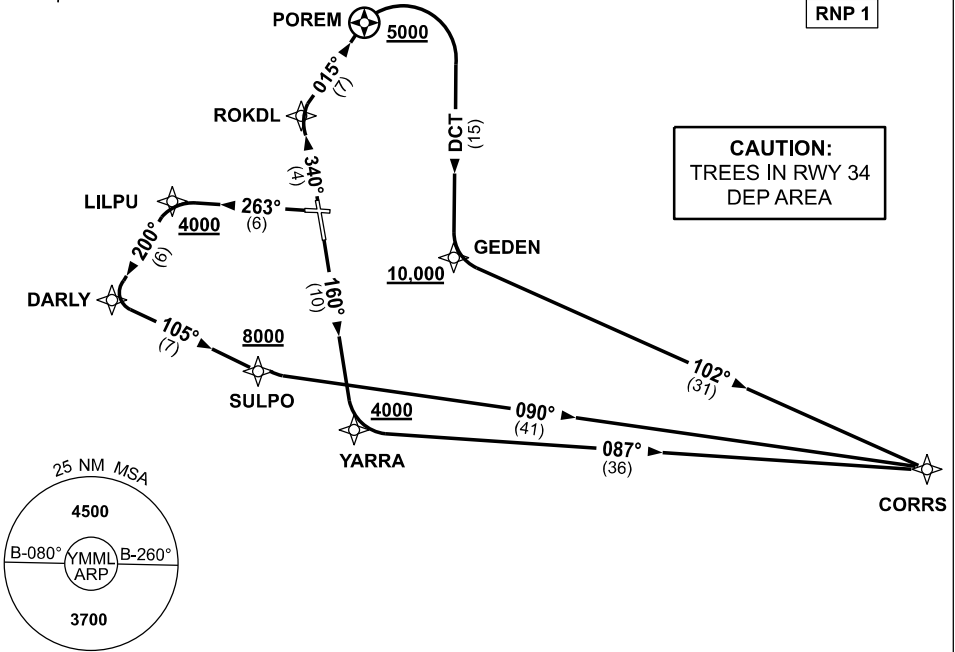
NOT TO SCALE



**SPEED**  
MAX IAS 250KT  
BELOW 10,000ft

RNP 1

**CAUTION:**  
TREES IN RWY 34  
DEP AREA



10 NM MSA 3300

**CORRS ONE DEPARTURE (RNAV)**

**RWY 16**

- GRAD 3.3%
- Track 160° to YARRA  
**Cross YARRA** AT or ABV 4000ft  
(RQ GRAD TO YARRA: 6.5%)
- Turn LEFT, track 087° to CORRS,  
then as cleared

**RWY 27**

- GRAD 3.3%
- Track 263° to LILPU  
**Cross LILPU** AT or ABV 4000ft  
(RQ GRAD TO LILPU: 9.9%)
- Turn LEFT, track 200° to DARLY
- Turn LEFT, track 105° to SULPO  
**Cross SULPO** AT or ABV 8000ft  
(RQ GRAD TO SULPO: 5.3%)
- Turn LEFT, track 090° to CORRS,  
then as cleared

**RWY 34**

- GRAD 4.6% to 1500ft then 3.3%
- Track 340° to ROKDL
- Turn RIGHT, track 015° to POREM  
**Cross POREM** AT or ABV 5000ft  
(RQ GRAD TO POREM: 7.1%)
- Turn RIGHT, track DCT to GEDEN  
**Cross GEDEN** AT or ABV 10,000ft  
(RQ GRAD TO GEDEN: 6.2%)
- Turn LEFT, track 102° to CORRS,  
then as cleared

Changes: MAGNETIC BEARINGS.

MMLDP11-184