

STANDARD INSTRUMENT DEPARTURES (SID)
CORRS ONE (JET)(RNAV)
MELBOURNE, VIC (YMML)

12 JUN 2025

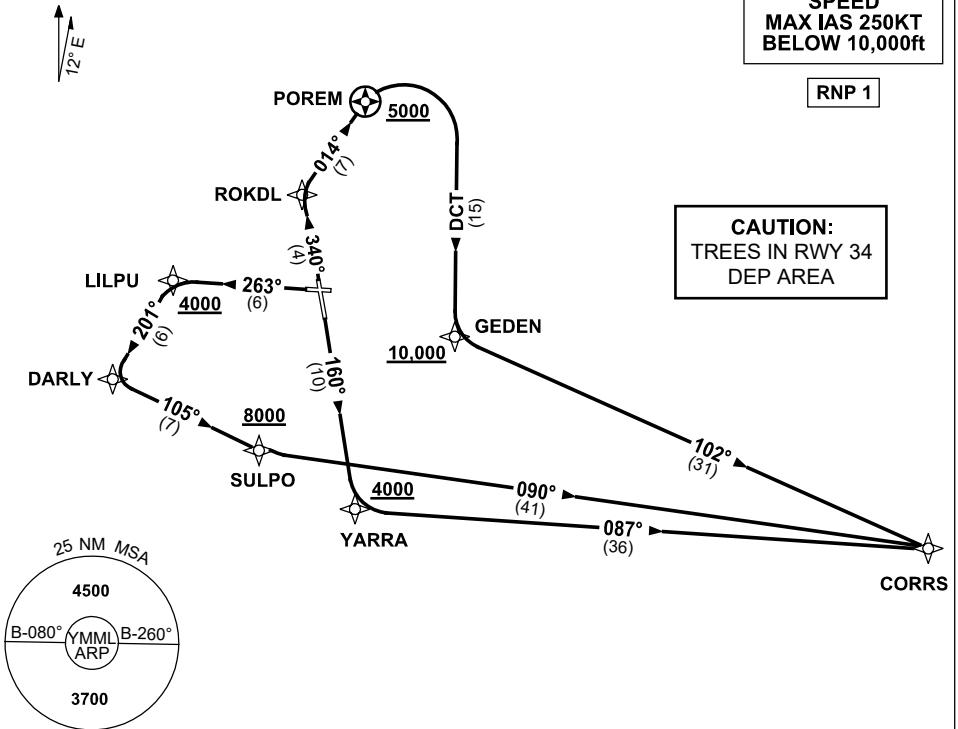
ATIS 114.1 118.0	ACD 127.2	SMC 121.7	TWR 120.5	DEP RWY 16 & 27 129.4 RWY 34 118.9
---------------------	--------------	--------------	--------------	--

NOT TO SCALE

SPEED
MAX IAS 250KT
BELOW 10,000ft

RNP 1

CAUTION:
TREES IN RWY 34
DEP AREA



CORRS ONE DEPARTURE (RNAV)

RWY 16

- GRAD 3.3%
- Track 160° to YARRA
Cross YARRA AT or ABV 4000ft
(RQ GRAD TO YARRA: 6.5%)
- Turn LEFT, track 087° to CORRS,
then as cleared

RWY 27

- GRAD 3.3%
- Track 263° to LILPU
Cross LILPU AT or ABV 4000ft
(RQ GRAD TO LILPU: 9.9%)
- Turn LEFT, track 201° to DARLY
- Turn LEFT, track 105° to SULPO
Cross SULPO AT or ABV 8000ft
(RQ GRAD TO SULPO: 5.3%)
- Turn LEFT, track 090° to CORRS,
then as cleared

RWY 34

- GRAD 4.6% to 1500ft then 3.3%
- Track 340° to ROKDL
- Turn RIGHT, track 014° to POREM
Cross POREM AT or ABV 5000ft
(RQ GRAD TO POREM: 7.1%)
- Turn RIGHT, track DCT to GEDEN
Cross GEDEN AT or ABV 10,000ft
(RQ GRAD TO GEDEN: 6.2%)
- Turn LEFT, track 102° to CORRS,
then as cleared

Changes: WPT NAMES, VALIDITY INDICATOR.

MMLDP11-183