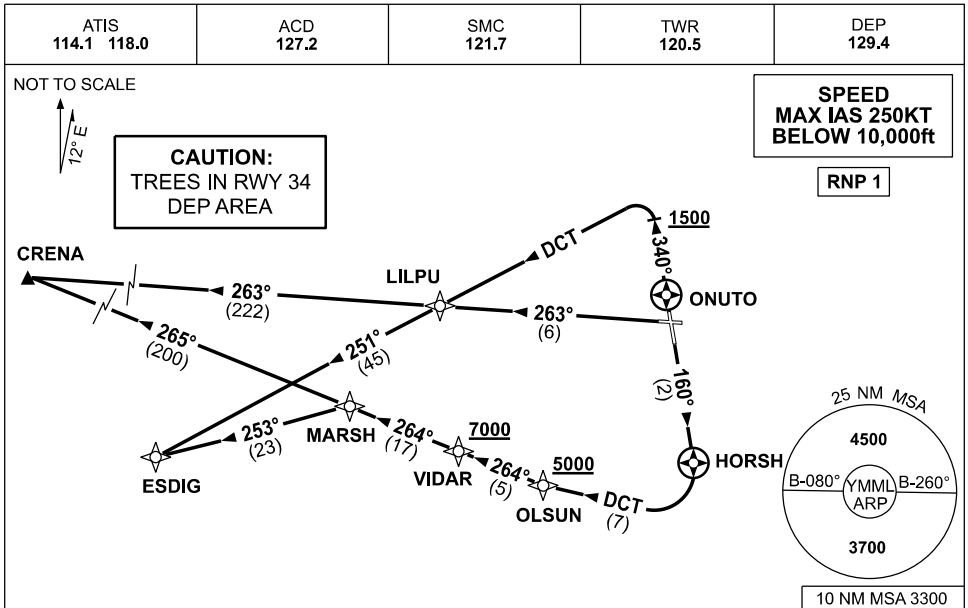


STANDARD INSTRUMENT DEPARTURES (SID)
CRENA THREE, ESDIG FIVE (JET)(RNAV)
MELBOURNE, VIC (YMML)

04 SEP 2025



CRENA THREE DEPARTURE
ESDIG FIVE DEPARTURE

RWY 16

- GRAD 3.3%
- Track 160° to HORSH
- At HORSH turn RIGHT
- Track DCT to OLSUN
Cross OLSUN AT or ABV 5000ft
(RQ GRAD TO OLSUN 8.5%)
- Track 264° to VIDAR
Cross VIDAR AT or ABV 7000ft
(RQ GRAD TO VIDAR 6.6%)
- Track 264° to MARSH

FOR ESDIG

- From MARSH turn LEFT,
- Track 253° to ESDIG, then as cleared

FOR CRENA

- Track 265° to CRENA, then as cleared

RWY 27

- GRAD 3.3%
- Track 263° to LILPU

FOR ESDIG

- From LILPU turn LEFT
- Track 251° to ESDIG, then as cleared

FOR CRENA

- From LILPU track 263° to CRENA,
then as cleared

RWY 34

- GRAD 3.5% to 1200ft then 3.3%
- Track 340°
- AT or ABV 1500ft but not before ONUTO
turn LEFT, track DCT to LILPU

FOR ESDIG

- From LILPU track 251° to ESDIG,
then as cleared

FOR CRENA

- From LILPU turn RIGHT track 263° to
CRENA, then as cleared

Changes: MAGNETIC BEARINGS, SEGMENT DISTANCE.

MMLDP07-184