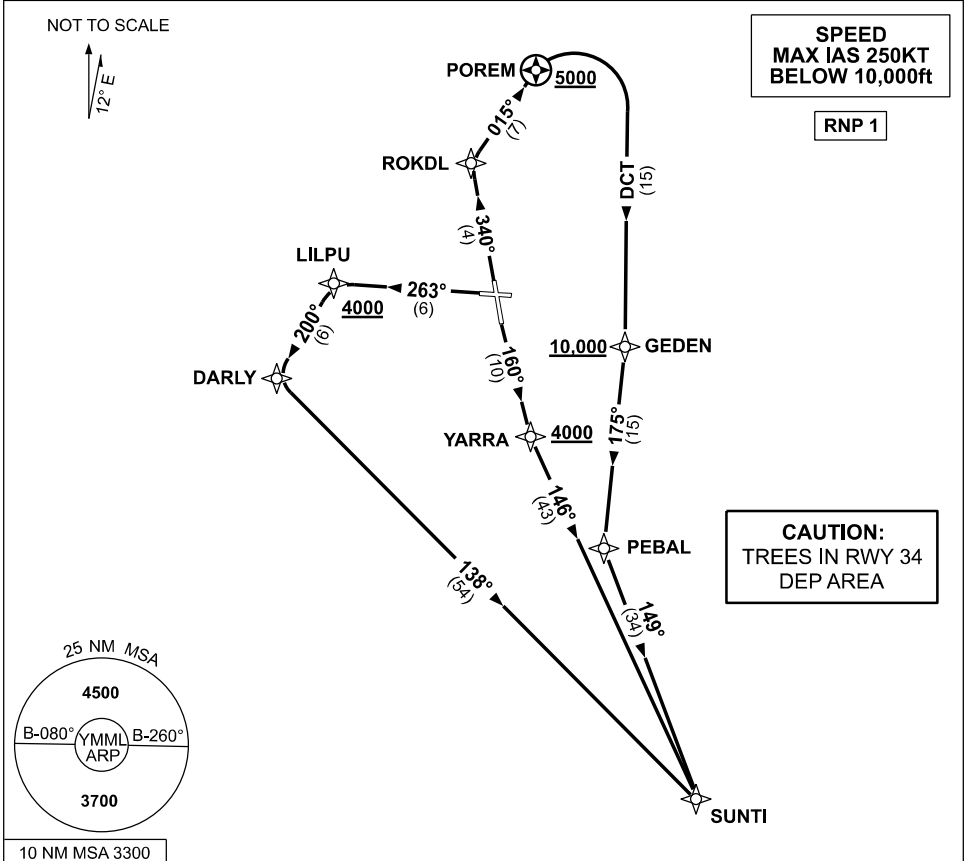


STANDARD INSTRUMENT DEPARTURES (SID)  
SUNTI FOUR (JET)(RNAV)  
MELBOURNE, VIC (YMML)

04 SEP 2025

ATIS 114.1 118.0	ACD 127.2	SMC 121.7	TWR 120.5	DEP 129.4 EXC RWY 34 SUNTI 118.9
---------------------	--------------	--------------	--------------	-------------------------------------



**SUNTI FOUR DEPARTURE**

**RWY 16**

- GRAD 3.3%
- Track 160° to YARRA  
**Cross** YARRA AT or ABV 4000ft  
(RQ GRAD TO YARRA: 6.5%)
- Turn LEFT, track 146° to SUNTI,  
then as cleared

**RWY 27**

- GRAD 3.3%
- Track 263° to LILPU  
**Cross** LILPU AT or ABV 4000ft  
(RQ GRAD TO LILPU: 9.9%)
- Turn LEFT track 200° to DARLY
- Turn LEFT track 138° to SUNTI,  
then as cleared

**RWY 34**

- GRAD 4.6% to 1500ft then 3.3%
- Track 340° to ROKDL
- Turn RIGHT, track 015° to POREM  
**Cross** POREM AT or ABV 5000ft  
(RQ GRAD TO POREM: 7.1%)
- Turn RIGHT, track DCT to GEDEN  
**Cross** GEDEN AT or ABV 10,000ft  
(RQ GRAD TO GEDEN: 6.2%)
- Track 175° to PEBAL
- Turn LEFT, track 149° to SUNTI,  
then as cleared

Changes: MAGNETIC BEARINGS.

MMLDP05-184