

STANDARD INSTRUMENT DEPARTURES (SID)
SUNTI FOUR (JET)(RNAV)
MELBOURNE, VIC (YMML)

12 JUN 2025

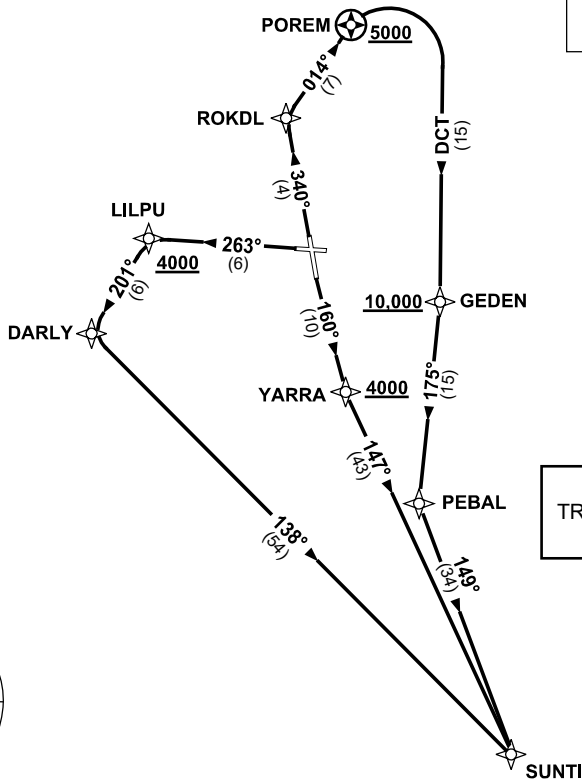
ATIS 114.1 118.0	ACD 127.2	SMC 121.7	TWR 120.5	DEP 129.4 EXC RWY 34 SUNTI 118.9
---------------------	--------------	--------------	--------------	-------------------------------------

NOT TO SCALE

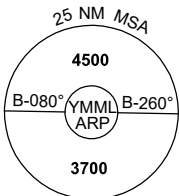


SPEED
MAX IAS 250KT
BELOW 10,000ft

RNP 1



CAUTION:
TREES IN RWY 34
DEP AREA



10 NM MSA 3300

SUNTI FOUR DEPARTURE

RWY 16

- GRAD 3.3%
- Track 160° to YARRA
Cross YARRA AT or ABV 4000ft
(RQ GRAD TO YARRA: 6.5%)
- Turn LEFT, track 147° to SUNTI,
then as cleared

RWY 27

- GRAD 3.3%
- Track 263° to LILPU
Cross LILPU AT or ABV 4000ft
(RQ GRAD TO LILPU: 9.9%)
- Turn LEFT track 201° to DARLY
- Turn LEFT track 138° to SUNTI,
then as cleared

RWY 34

- GRAD 4.6% to 1500ft then 3.3%
- Track 340° to ROKDL
- Turn RIGHT, track 014° to POREM
Cross POREM AT or ABV 5000ft
(RQ GRAD TO POREM: 7.1%)
- Turn RIGHT, track DCT to GEDEN
Cross GEDEN AT or ABV 10,000ft
(RQ GRAD TO GEDEN: 6.2%)
- Track 175° to PEBAL
- Turn LEFT, track 149° to SUNTI,
then as cleared

Changes: WPT NAME, VALIDITY INDICATOR.

MMLDP05-183