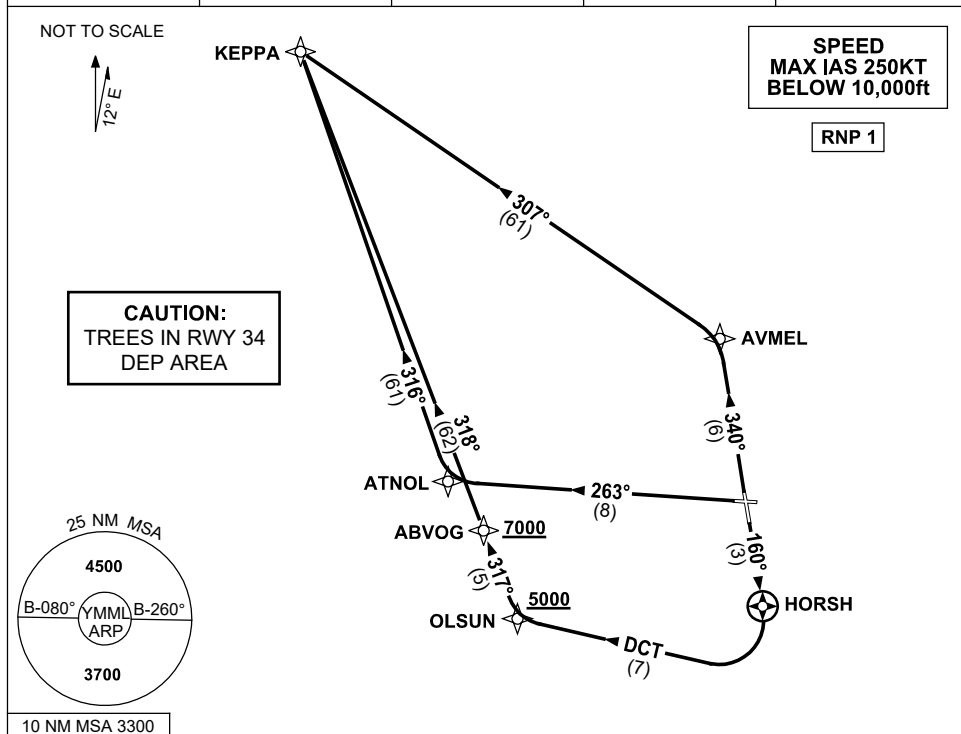


STANDARD INSTRUMENT DEPARTURES (SID)
KEPPA THREE (JET) (RNAV)
MELBOURNE, VIC (YMML)

12 JUN 2025

ATIS 114.1 118.0	ACD 127.2	SMC 121.7	TWR 120.5	DEP 118.9
---------------------	--------------	--------------	--------------	--------------



KEPPA THREE DEPARTURE

RWY 16

- GRAD 3.3%
- Track 160° to HORSH
- At HORSH turn RIGHT
- Track DCT to OLSUN
- **Cross** OLSUN AT or ABV 5000ft
(RQ GRAD TO OLSUN 8.5%)
- Turn RIGHT, track 317° to ABVOG
- **Cross** ABVOG AT or ABV 7000ft
(RQ GRAD TO ABVOG 7.4%)
- Turn RIGHT, track 318° to KEPPA,
then as cleared

RWY 27

- GRAD 3.3%
- Track 263° to ATNOL
- Turn RIGHT, track 316° to KEPPA,
then as cleared

RWY 34

- GRAD 3.5% to 1200ft then 3.3%
- Track 340° to AVMEL
- Turn LEFT, track 307° to KEPPA,
then as cleared

Changes: WPT NAMES, VALIDITY INDICATOR.

MMLDP04-183