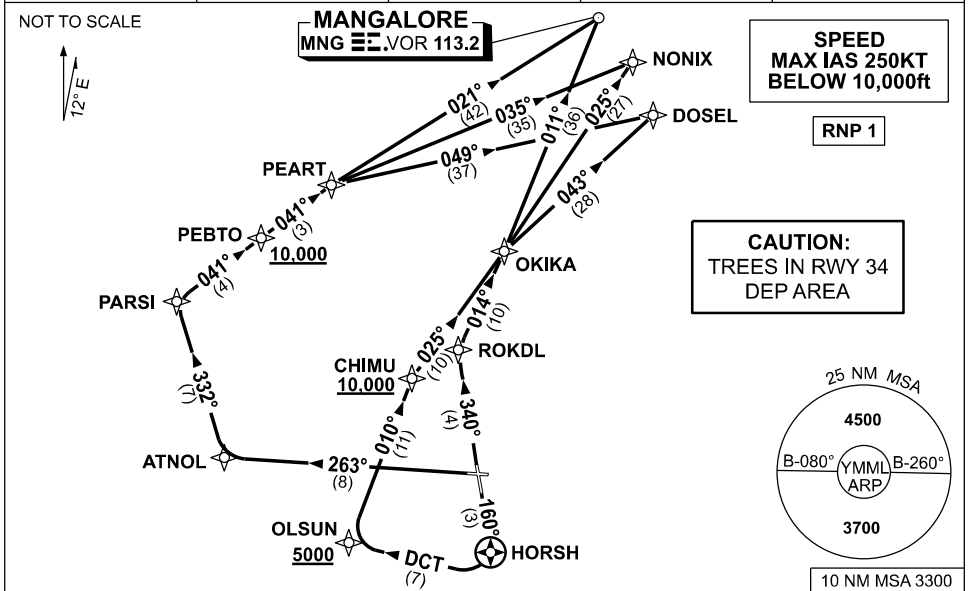


# STANDARD INSTRUMENT DEPARTURES (SID) DOSEL TWO, MNG FOUR, NONIX FOUR (JET) (RNAV) MELBOURNE, VIC (YMML)

04 SEP 2025

ATIS 114.1 118.0	ACD 127.2	SMC 121.7	TWR 120.5	DEP 118.9
---------------------	--------------	--------------	--------------	--------------



**MANGALORE (MNG)**  
**NONIX**  
**DOSEL**

**FOUR**  
**FOUR**  
**TWO**

**DEPARTURE**  
**DEPARTURE**  
**DEPARTURE**

## RWY 16

- GRAD 3.3%
- Track 160° to HORSH
- At HORSH turn RIGHT, track DCT to OLSUN  
**Cross** OLSUN AT or ABV 5000ft  
(RQ GRAD TO OLSUN: 8.5%)
- Turn RIGHT, track 010° to CHIMU  
**Cross** CHIMU AT or ABV 10,000ft  
(RQ GRAD TO CHIMU: 7.8%)
- Turn RIGHT, track 025° to OKIKA

## FOR MNG

- Turn LEFT, track 011° to MNG VOR,  
then as cleared

## FOR NONIX

- Track 025° to NONIX, then as cleared

## FOR DOSEL

- Turn RIGHT, track 043° to DOSEL,  
then as cleared

## RWY 27

- GRAD 3.3%
- Track 263° to ATNOL
- Turn RIGHT, track 332° to PARSI
- Turn RIGHT, track 041° to PEBTO  
**Cross** PEBTO AT or ABV 10,000ft  
(RQ GRAD TO PEBTO: 8.5%)
- Track 041° to PEART

## FOR MNG

- Turn LEFT, track 021° to MNG VOR,  
then as cleared

## FOR NONIX

- Turn LEFT, track 035° to NONIX,  
then as cleared

## FOR DOSEL

- Turn RIGHT, track 049° to DOSEL,  
then as cleared

## RWY 34

- GRAD 4.6% to 1500ft then 3.3%
- Track 340° to ROKDL
- Turn RIGHT, track 014° to OKIKA

## FOR MNG

- Track 011° to MNG VOR, then as cleared

## FOR NONIX

- Track 025° to NONIX, then as cleared

## FOR DOSEL

- Track 043° to DOSEL, then as cleared

Changes: MAGNETIC BEARINGS.

MMLDP02-184