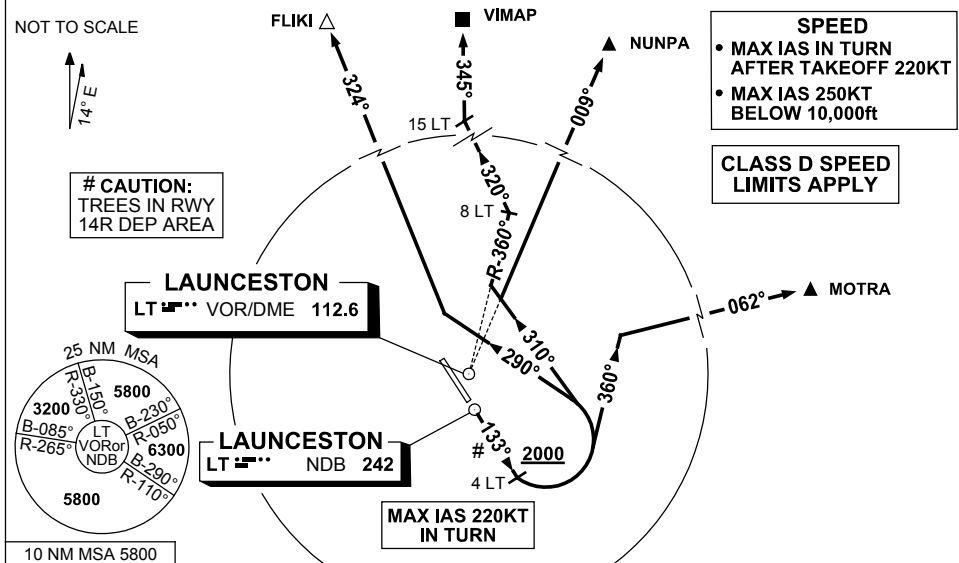


# STANDARD INSTRUMENT DEPARTURES (SID) RWY 14R NORTH BRAVO LAUNCESTON TAS (YMLT)

28 NOV 2024

ATIS 112.6 (TWR HR) 134.75 (H24)	AWIS (AH) 112.6	TWR 118.7	LT APP/FIA (AH) ML CEN 123.8	CTAF+AFRU (AH) 118.7	AFRU+PAL (AH) 118.7	Bearings are Magnetic Elevations in FEET AMSL
--	--------------------	--------------	---------------------------------	-------------------------	------------------------	--



NUNPA	TWO	BRAVO	DEPARTURE
VIMAP	ONE	BRAVO	DEPARTURE
MOTRA	TWO	BRAVO	DEPARTURE
FLIKI	ONE	BRAVO	DEPARTURE

## RWY 14R

- GRAD 4.6% to 6300ft then 3.3%
- Track 133°
- (MAX IAS 220KT IN TURN)

## FOR MOTRA

- AT or ABV 2000ft, but not before 4 DME LT, turn LEFT, track 360°
- Intercept route as cleared

## FOR NUNPA

- AT or ABV 2000ft, but not before 4 DME LT, turn LEFT, track 310°
- Intercept route as cleared

## FOR VIMAP

- AT or ABV 2000ft, but not before 4 DME LT, turn LEFT, track 310°
- Intercept LT R-360°
- AT 8 DME LT, turn LEFT, track 320°
- Intercept route as cleared by 15 DME LT

## FOR FLIKI

- AT or ABV 2000ft, but not before 4 DME LT, turn LEFT, track 290°
- Intercept route as cleared

Changes: FLIKI ONE BRAVO SID.

MLTDP05-181