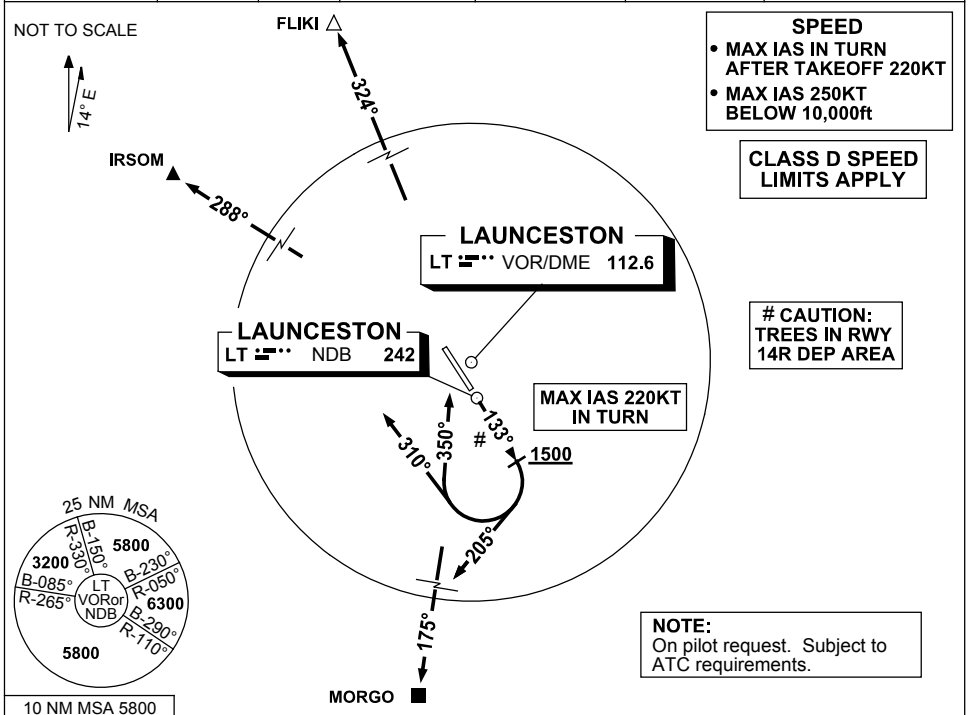


# STANDARD INSTRUMENT DEPARTURES (SID) RWY 14R CHARLIE (NON-JET) LAUNCESTON TAS (YMLT)

28 NOV 2024

|  |                    |              |                                 |                         |                        |  |
|--|--------------------|--------------|---------------------------------|-------------------------|------------------------|--|
| ATIS<br>112.6 (TWR HR)<br>134.75 (H24) | AWIS (AH)<br>112.6 | TWR<br>118.7 | LT APP/FIA (AH)<br>ML CEN 123.8 | CTAF+AFRU (AH)<br>118.7 | AFRU+PAL (AH)<br>118.7 | Bearings are Magnetic<br>Elevations in FEET AMSL |
|--|--------------------|--------------|---------------------------------|-------------------------|------------------------|--|



IRSOM TWO CHARLIE DEPARTURE MORGU TWO CHARLIE DEPARTURE  
FLIKI ONE CHARLIE DEPARTURE

## RWY 14R

- Track 133°  
(MAX IAS 220KT IN TURN)

## FOR IRSOM

- GRAD 3.3%
- AT or ABV 1500ft turn RIGHT track 310°
- Intercept route as cleared

## FOR FLIKI

- GRAD 3.3%
- AT or ABV 1500ft turn RIGHT track 350°
- Intercept route as cleared by 5 DME North of LT

## FOR MORGU

- GRAD 4% TO 2100ft then 3.3%
- AT or ABV 1500ft turn RIGHT track 205°
- Track 205°
- Intercept route as cleared

Changes: FLIKI ONE CHARLIE SID.

MLTDP03-181