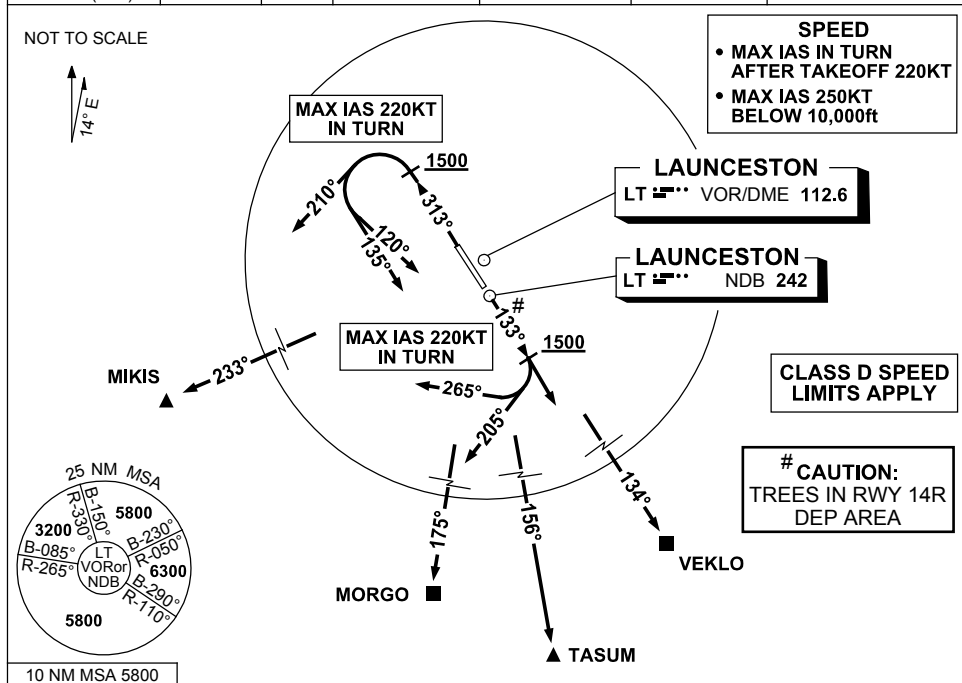


STANDARD INSTRUMENT DEPARTURES (SID) RWY 14R/32L SOUTH LAUNCESTON TAS (YMLT)

30 NOV 2023

ATIS 112.6 (TWR HR) 134.75 (H24)	AWIS (AH) 112.6	TWR 118.7	LT APP/FIA (AH) ML CEN 123.8	CTAF+AFRU (AH) 118.7	AFRU+PAL (AH) 118.7	Bearings are Magnetic Elevations in FEET AMSL
--	--------------------	--------------	---------------------------------	-------------------------	------------------------	--



MIKIS	ONE	DEPARTURE
MORG	TWO ALPHA	DEPARTURE
TASUM	TWO	DEPARTURE
VEKLO	ONE	DEPARTURE

RWY 14R

- GRAD 4.6% to 6300ft, then 3.3%
- Track 133°
- AT OR ABV 1500ft
(MAX IAS 220KT IN TURN)

FOR MIKIS

- Turn RIGHT
- Track 265°
- Intercept route as cleared

FOR MORG and TASUM

- Turn RIGHT
- Track 205°
- Intercept route as cleared

FOR VEKLO

- Intercept route as cleared

RWY 32L

- Track 313°
- AT OR ABV 1500ft turn LEFT
(MAX IAS 220KT IN TURN)

FOR MIKIS

- GRAD 4.3% to 2700ft then 3.3%
- Track 210°
- Intercept route as cleared

FOR MORG and TASUM

- GRAD 4.3% to 1500ft then 3.3%
- Track 135°
- Intercept route as cleared

FOR VEKLO

- GRAD 3.3%
- Track 120°
- Intercept route as cleared

Changes: MIKIS REPLACES IRONS, VEKLO REPLACES KAREN, PROC NAME, FROM SUP H40/23.

MLTDP02-177