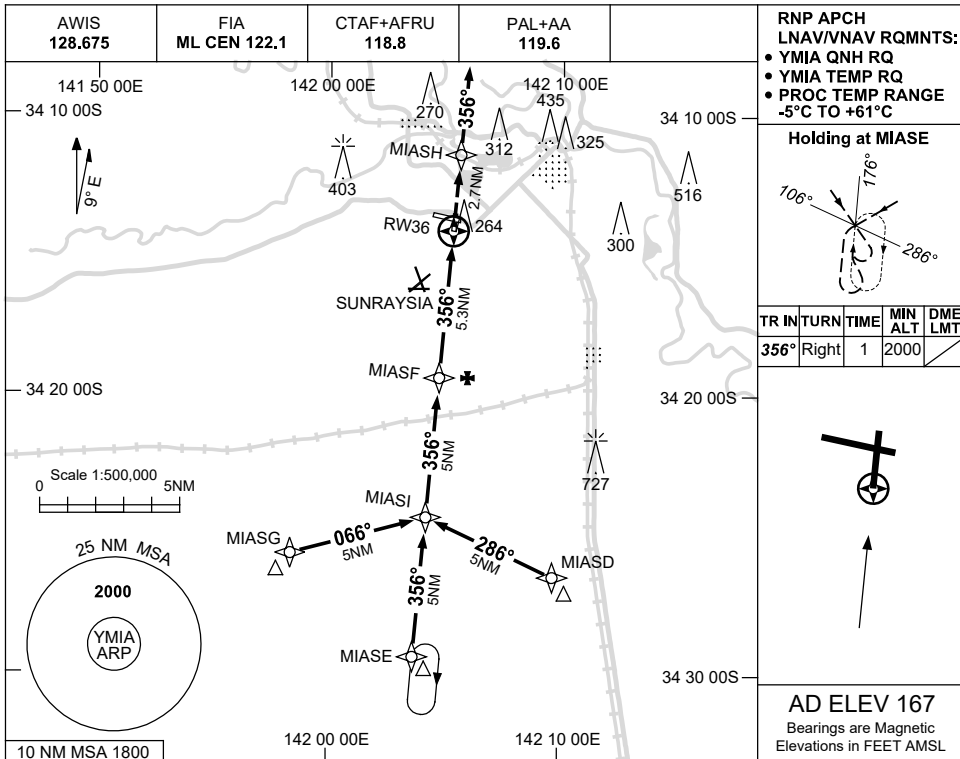


USE QNH

RNP RWY 36  
MILDURA, VIC (YMIA)

15 JUN 2023

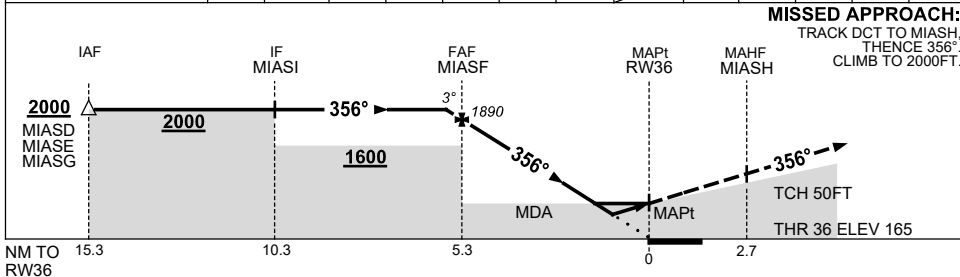


**Holding at MIA SE**

TR IN	TURN	TIME	MIN ALT	DME LMT
356°	Right	1	2000	

**AD ELEV 167**  
Bearings are Magnetic  
Elevations in FEET AMSL

NM TO NEXT WPT	0.3	MIASF	4	3	2	1.4	0.8	RW36				
ALT (3° APCH PATH)	2000	1890	1490	1170	850	660	470					



**NOTES**

- MAX IAS:  
INITIAL : 210KT.
- CAUTION:**  
GLIDER OPS 2.3NM  
SSW OF YMIA AD  
CONFLICTS WITH  
FINAL APPROACH.

CATEGORY	A	B	C	D
LNAV/VNAV		470 (305-1.7)		NOT APPLICABLE
LNAV		660 (493-2.8)		
CIRCLING	840 (673-2.4)		900 (733-4.0)	980 (813-5.0)
ALTERNATE	(1173-4.4)		(1233-6.0)	(1313-7.0)

Changes: CHART TITLE, PBN SPECIFICATION BOX, Editorial.

MIAQ04-175