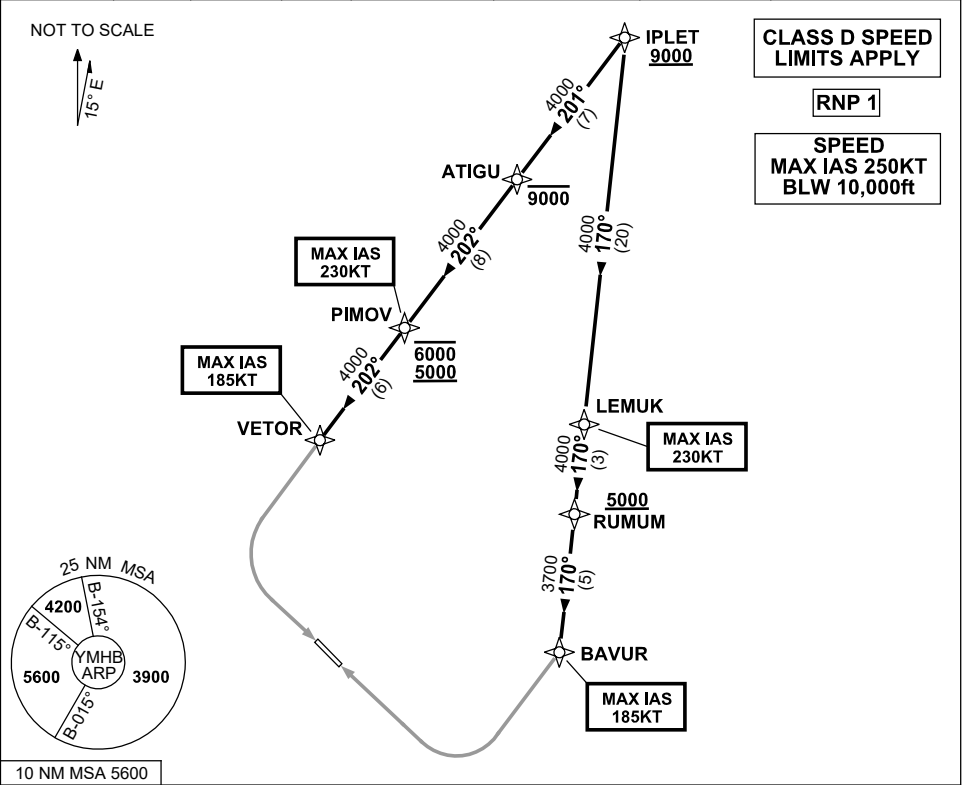


STANDARD INSTRUMENT ARRIVAL (STAR)  
IPLET SEVEN WHISKEY ARRIVAL (RNAV)  
HOBART, TAS (YMHB)

21 MAR 2024

|                      |                 |                  |              |                                  |                         |                        |  |
|----------------------|-----------------|------------------|--------------|----------------------------------|-------------------------|------------------------|--|
| ATIS<br>112.7 128.45 | AWIS<br>122.375 | SMC/ACD<br>121.7 | TWR<br>118.1 | HB APP/FIA (AH)<br>ML CEN 125.55 | CTAF+AFRU (AH)<br>118.1 | AFRU+PAL (AH)<br>118.1 | Bearings are Magnetic<br>Elevations in FEET AMSL |
|----------------------|-----------------|------------------|--------------|----------------------------------|-------------------------|------------------------|--|



**ARRIVAL: IPLET SEVEN WHISKEY**

**RWY 12:**

- Cross** IPLET AT or ABV 9000ft
- From IPLET, track 201° to ATIGU
- Cross** ATIGU AT or BLW 9000ft
- Track 202° to PIMOV
- Cross** PIMOV BTN 5000ft and 6000ft
- MAX IAS 230KT from PIMOV
- Track 202° to VETOR
- MAX IAS 185KT from VETOR
- Turn LEFT, track via RNP W RWY 12 (AR)

**RWY 30:**

- Cross** IPLET AT or ABV 9000ft
- From IPLET, track 170° to LEMUK
- MAX IAS 230KT from LEMUK
- Track 170° to RUMUM
- Cross** RUMUM AT or ABV 5000ft
- Track 170° to BAVUR
- MAX IAS 185KT from BAVUR
- Turn RIGHT, track via RNP W RWY 30 (AR)

**COMMUNICATIONS FAILURE: PROCEDURE IN IMC**

- Squawk 7600, comply with vertical navigation requirements, but not below MSA.
- Track via the latest STAR clearance to the nominated runway, then fly the most suitable approach in accordance with ERSB EMERG Section 1.5.

Changes: REVISED PROC, VALIDITY INDICATOR.

MHBSR05-178