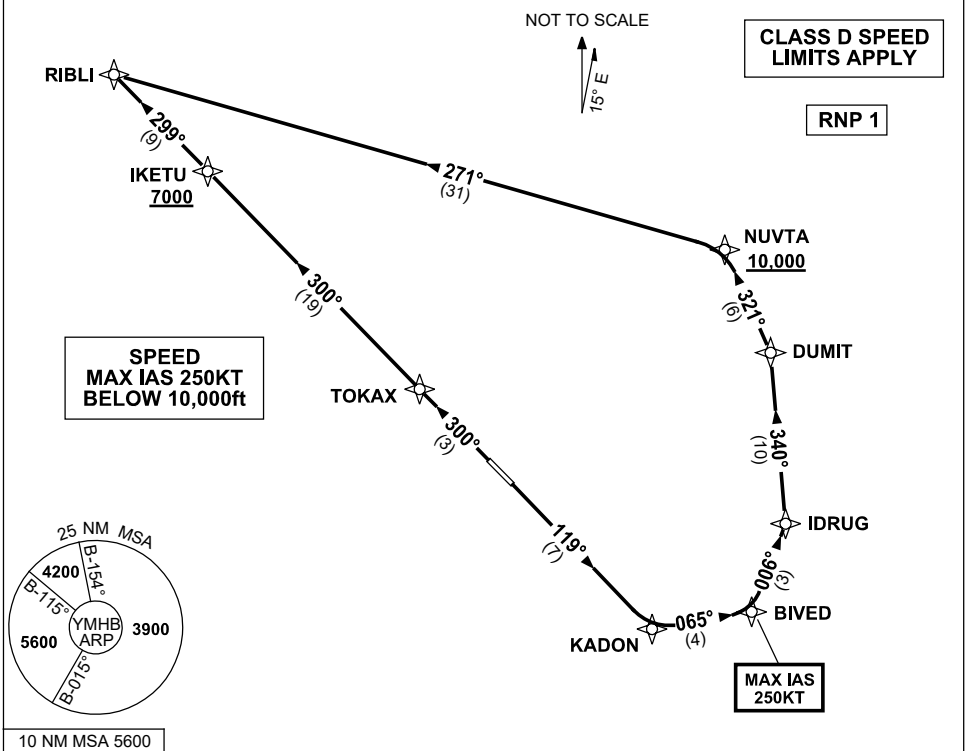


STANDARD INSTRUMENT DEPARTURES (SID)
RIBLI ONE DEPARTURE (RNAV)
HOBART TAS (YMHB)

30 NOV 2023

| | | | | | | | |
|----------------------|-----------------|------------------|--------------|----------------------------------|-------------------------|------------------------|--|
| ATIS 112.7 128.45 | AWIS 122.375 | SMC/ACD 121.7 | TWR 118.1 | HB APP/FIA (AH) ML CEN 125.55 | CTAF+AFRU (AH) 118.1 | AFRU+PAL (AH) 118.1 | Bearings are Magnetic Elevations in FEET AMSL |
|----------------------|-----------------|------------------|--------------|----------------------------------|-------------------------|------------------------|--|



RIBLI ONE DEPARTURE

RWY 12

- GRAD 3.3%
MAX IAS 250KT until BIVED
- Track 119° to KADON
- Turn LEFT, track 065° to BIVED
- Turn LEFT, track 006° to IDRUG
- Turn LEFT, track 340° to DUMIT
- Turn LEFT, track 321° to NUVTA
Cross NUVTA AT or ABV 10,000ft
(RQ GRAD to NUVTA 5.6%)
- Turn LEFT, track 271° to RIBLI

RWY 30

- GRAD 4.1% to 1800ft thence 3.3%
- Track 300° to TOKAX
- Track 300° to IKETU
Cross IKETU AT or ABV 7000ft
(RQ GRAD to IKETU 5.5%)
- Track 299° to RIBLI

Changes: RIBLI REPLACES CLARK, VALIDITY NUMBER, SPEED RESTRICTION, Editorial.

MHBDP06-177