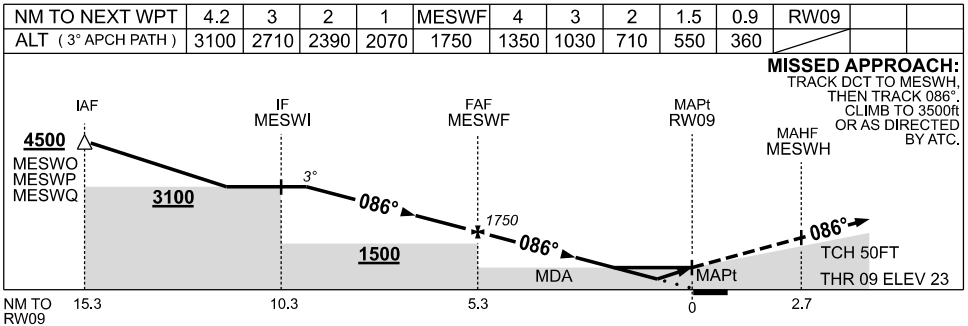
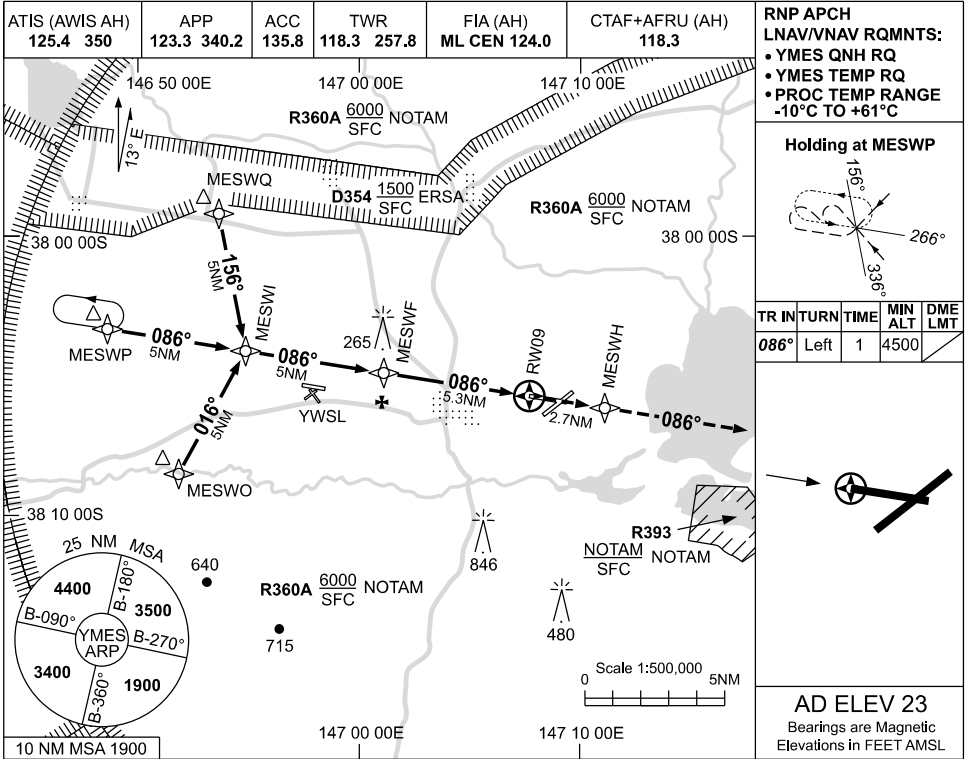


USE QNH

RNP RWY 09

09 JUL 2026

EAST SALE, VIC (YMES)



MISSED APPROACH:
TRACK DCT TO MESWH,
THEN TRACK 086°.
CLIMB TO 3500ft
OR AS DIRECTED
BY ATC.

NOTES

1. MAX IAS:
INITIAL : 210KT.
2. HOLDING NOT
CONTAINED WITHIN
EAST SALE RESTD
AREAS.

CATEGORY	A	B	C	D
RNAV/VNAV		360 (337-1.9)		
RNAV		560 (537-3.0)		
CIRCLING	630 (607-2.4)	830 (807-4.0)	1030 (1007-5.0)	
ALTERNATE	(1107-4.4)	(1307-6.0)	(1507-7.0)	

Changes: D354.

MESGN01-187