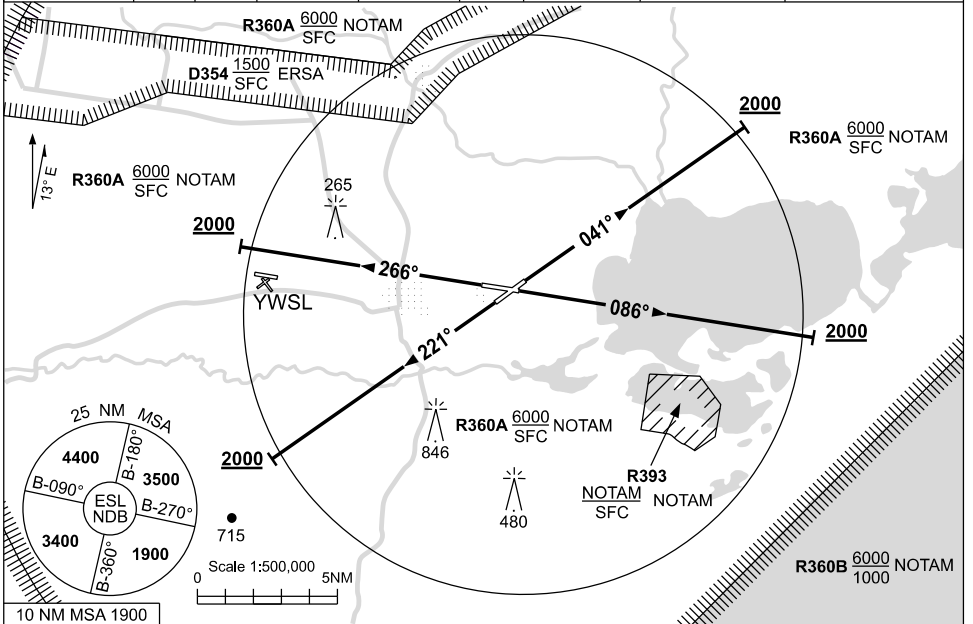


**STANDARD INSTRUMENT DEPARTURES (SID)
EAST SALE FIVE DEPARTURE (RADAR)
EAST SALE, VIC (YMES)**

09 JUL 2026

ATIS (AWIS AH) 125.4 350	SMC 127.25	ACD 134.1	TWR 118.3 257.8	APP 123.3 340.2	ACC 135.8	FIA (AH) ML CEN 124.0	CTAF+AFRU (AH) 118.3	Bearings are Magnetic Elevations in FEET AMSL
-----------------------------	---------------	--------------	--------------------	--------------------	--------------	--------------------------	-------------------------	--



EAST SALE FIVE DEPARTURE (RADAR)

RWY 04

GRAD 3.3%

- Track 041°
- At 2000ft, but not before DER, turn to assigned heading or track

RWY 09

GRAD 3.3%

- Track 086°
- At 2000ft, but not before DER, turn to assigned heading or track

RWY 22

GRAD 3.6% to 1200ft then 3.3%

- Track 221°
- At 2000ft, but not before DER, turn to assigned heading or track

RWY 27

GRAD 3.3%

- Track 266°
- At 2000ft, but not before DER, turn to assigned heading or track

COMMUNICATIONS FAILURE PROCEDURE

On recognition of communication failure

- Squawk 7600
- Maintain last assigned vector for two minutes, and
- CLIMB IF NECESSARY TO MINIMUM SAFE ALTITUDE, to maintain terrain clearance, then
- proceed in accordance with the latest ATC route clearance acknowledged.

Changes: D354.

MESDP01-187