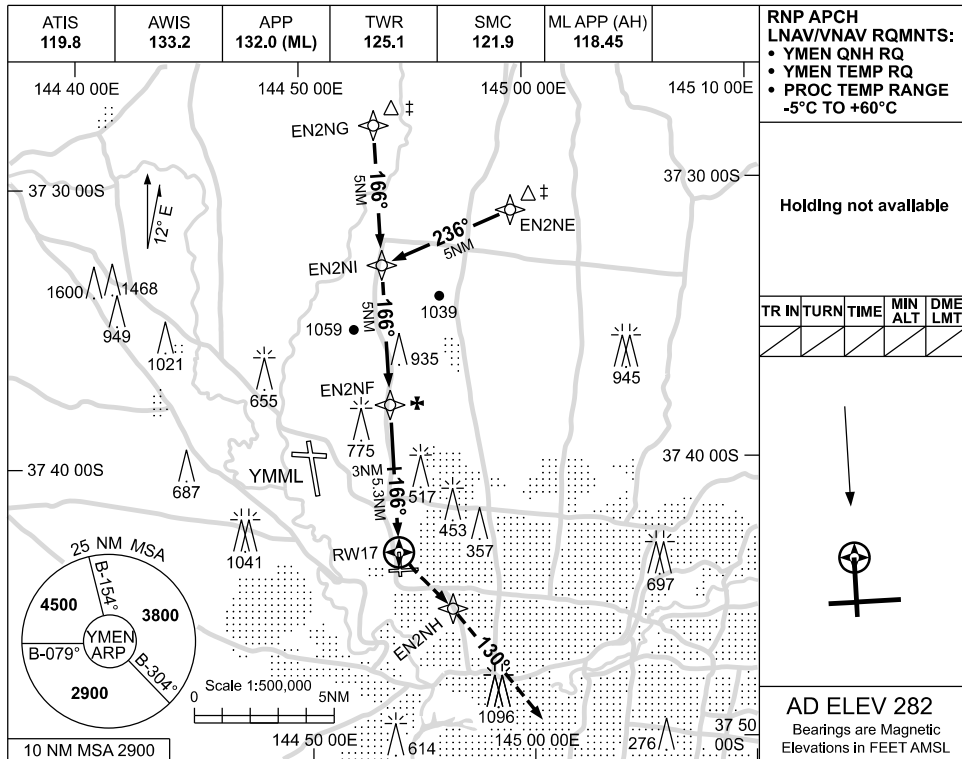


USE QNH

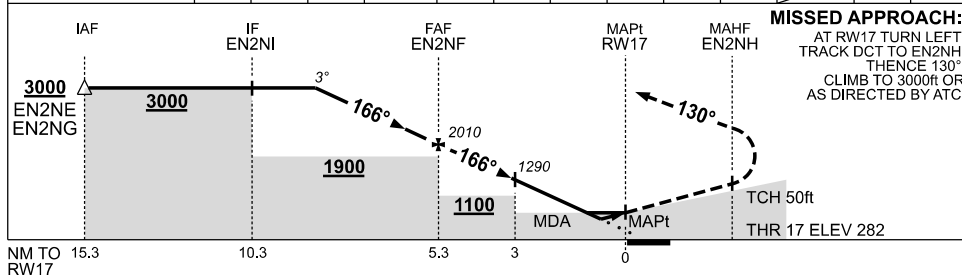
RNP RWY 17

09 JUL 2026

MELBOURNE/ESSENDON, VIC (YMEN)



NM TO NEXT WPT	3.1	2	1	EN2NF	4	3	1.8	1.4	1.2	1.1	RW17		
ALT (3° APCH PATH)	3000	2650	2330	2010	1610	1290	890	770	700	670			



MISSED APPROACH:
 AT RW17 TURN LEFT,
 TRACK DCT TO EN2NH,
 THENCE 130°,
 CLIMB TO 3000ft OR
 AS DIRECTED BY ATC.

TCH 50ft
 THR 17 ELEV 282

NOTES

1. MAX IAS:
INITIAL : 210KT.
- ‡ 2. AIRCRAFT WILL BE
RADAR VECTORED
TO IAF.

CATEGORY	A	B	C	D
LNAV/VNAV		670 (388-2.2)	700 (418-2.3)	770 (488-2.8)
LNAV		890 (608-3.5)		
CIRCLING		990 (708-2.4)	1260 (978-4.0)	1540 (1258-5.0)
ALTERNATE		(1208-4.4)	(1478-6.0)	(1758-7.0)

Changes: PAL+AA DELETED, Editorial.

MENGN02-187