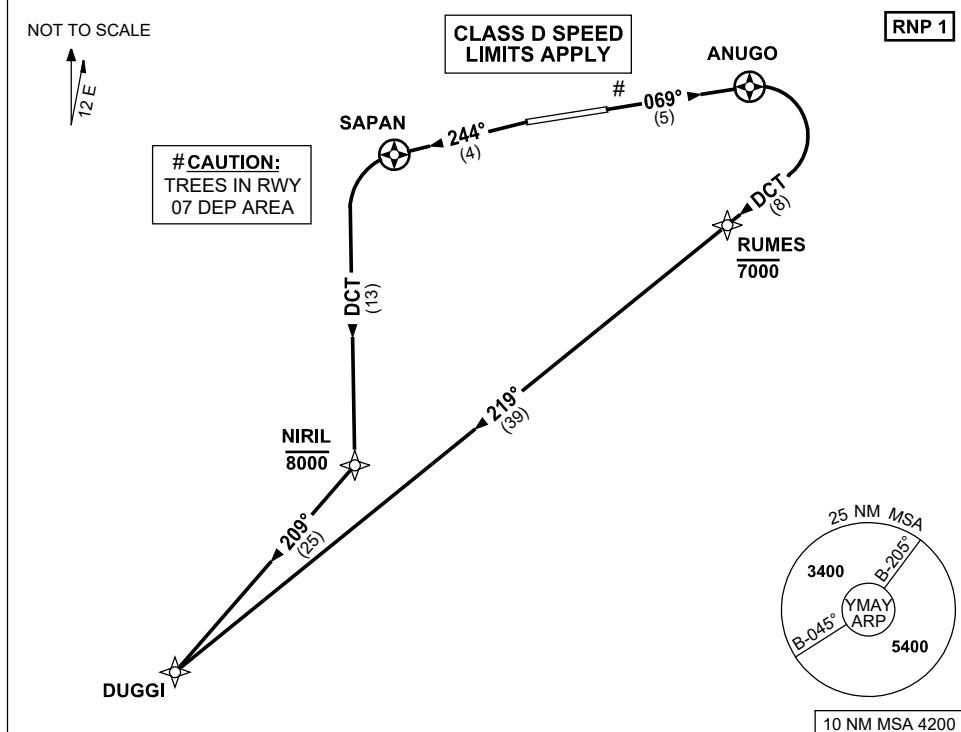


STANDARD INSTRUMENT DEPARTURES (SID)
DUGGI ONE DEPARTURE (RNAV)
ALBURY, NSW (YMAY)

30 NOV 2023

AWIS 134.525	ATIS 115.6 133.85	TWR 123.25	SMC 121.8	CTAF+AFRU (AH) 123.25	FIA (AH) ML CEN 125.2	AFRU+PAL (AH) 123.25	Bearings are Magnetic Elevations in FEET AMSL
-----------------	----------------------	---------------	--------------	--------------------------	--------------------------	-------------------------	--



DUGGI ONE DEPARTURE

RWY 07

- GRAD 5.6% TO 2600ft THEN 3.3%
- Track 069° to ANUGO
- Turn RIGHT, track DCT to RUMES
Cross RUMES AT or BLW 7000ft
- Track 219° to DUGGI

NOTE: PROC NOT AVBL WHEN R368 ACT
UNLESS ADVISED BY ATC.

RWY 25

- GRAD 4.8% TO 1400ft THEN 3.3%
(5.0% TO 2500ft)
- NOT BEFORE DER turn LEFT,
track 244° to SAPAN
- Turn LEFT, track DCT to NIRIL
Cross NIRIL AT or BLW 8000ft
- Turn RIGHT, track 209° to DUGGI