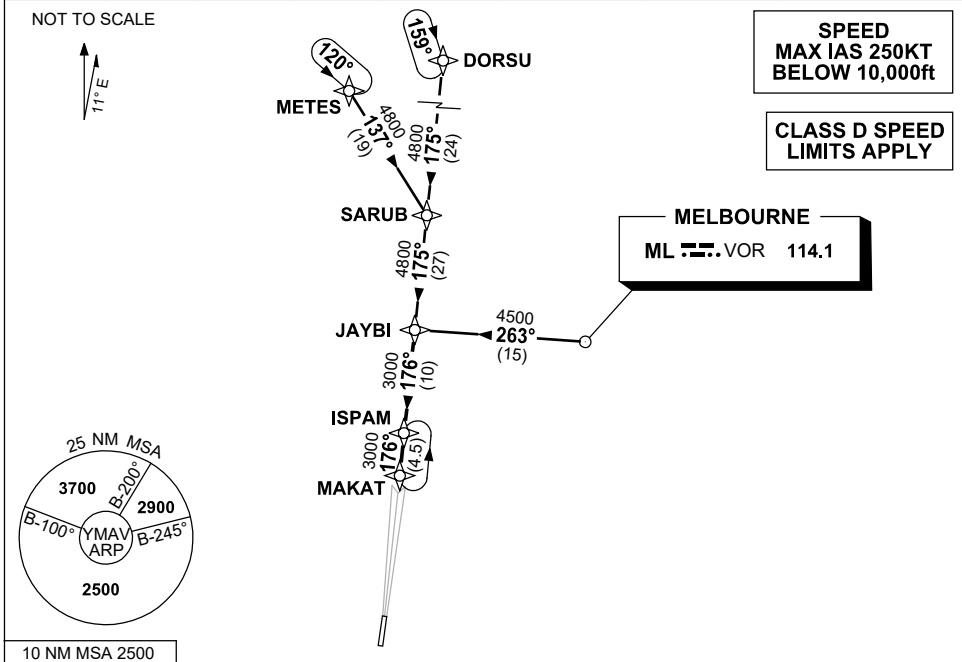


# STANDARD INSTRUMENT ARRIVAL (STAR) JAYBI SIX ARRIVAL (RNAV) AVALON, VIC (YMAV)

12 JUN 2025

ATIS 118.2 116.1	AWIS (AH) 116.1	AV APP 133.55	TWR 120.1	FIA (AH) ML CEN 135.7	CTAF+AFRU (AH) 120.1	AFRU+PAL (AH) 120.1	Bearings are Magnetic Elevations in FEET AMSL
---------------------	--------------------	------------------	--------------	--------------------------	-------------------------	------------------------	--



<b>TRANSITION:</b>	
<b>DORSU:</b> From DORSU to JAYBI: • Track 175° to SARUB • Track 175° to JAYBI • Then follow ARRIVAL instruction	<b>MELBOURNE:</b> From ML VOR to JAYBI: (ML VOR) • Track 263° to JAYBI • Then follow ARRIVAL instruction
	<b>METES:</b> From METES to JAYBI: • Track 137° to SARUB • Track 175° to JAYBI • Then follow ARRIVAL instruction

<b>ARRIVAL:</b> <b>JAYBI SIX (RNAV)</b>
<b>RWY 18:</b> From JAYBI: • Track 176° to ISPAM • Track 176° to MAKAT • Intercept RWY 18 LOC
<b>RWY 36:</b> From JAYBI: • Track 176° to ISPAM • Track 176° to MAKAT From MAKAT expect tracking instructions or radar vectors for final

<b>COMMUNICATIONS FAILURE: PROCEDURE IN IMC</b>
<ul style="list-style-type: none"> <li>Squawk 7600, comply with vertical navigation requirements, but not below MSA.</li> <li>Track via the latest STAR clearance to the nominated runway, then fly the most suitable approach in accordance with ERS A EMERG Section 1.5.</li> </ul>

Changes: WPT NAMES, VALIDITY INDICATOR, Editorial.

MAVSR01-183