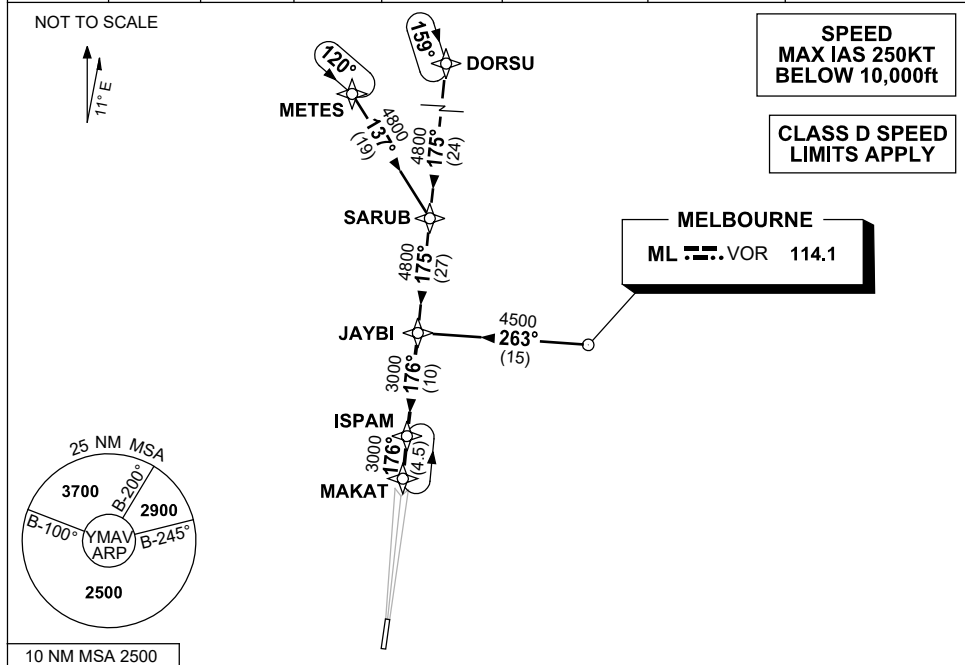


STANDARD INSTRUMENT ARRIVAL (STAR) JAYBI SIX ARRIVAL (RNAV) AVALON, VIC (YMAV)

12 JUN 2025

| | | | | | | | |
|---------------------|--------------------|------------------|--------------|--------------------------|-------------------------|------------------------|--|
| ATIS 118.2 116.1 | AWIS (AH) 116.1 | AV APP 133.55 | TWR 120.1 | FIA (AH) ML CEN 135.7 | CTAF+AFRU (AH) 120.1 | AFRU+PAL (AH) 120.1 | Bearings are Magnetic Elevations in FEET AMSL |
|---------------------|--------------------|------------------|--------------|--------------------------|-------------------------|------------------------|--|



TRANSITION:

DORSU: From DORSU to JAYBI:

- Track 175° to SARUB
- Track 175° to JAYBI
- Then follow ARRIVAL instruction

MELBOURNE: From ML VOR to JAYBI:

(ML VOR)

- Track 263° to JAYBI
- Then follow ARRIVAL instruction

METES: From METES to JAYBI:

- Track 137° to SARUB
- Track 175° to JAYBI
- Then follow ARRIVAL instruction

ARRIVAL: JAYBI SIX (RNAV)

RWY 18: From JAYBI:

- Track 176° to ISPAM
- Track 176° to MAKAT
- Intercept RWY 18 LOC

RWY 36: From JAYBI:

- Track 176° to ISPAM
- Track 176° to MAKAT

From MAKAT expect tracking instructions or radar vectors for final

COMMUNICATIONS FAILURE: PROCEDURE IN IMC

- Squawk 7600, comply with vertical navigation requirements, but not below MSA.
- Track via the latest STAR clearance to the nominated runway, then fly the most suitable approach in accordance with ERSA EMERG Section 1.5.

Changes: WPT NAMES, VALIDITY INDICATOR, Editorial.

MAVSR01-183