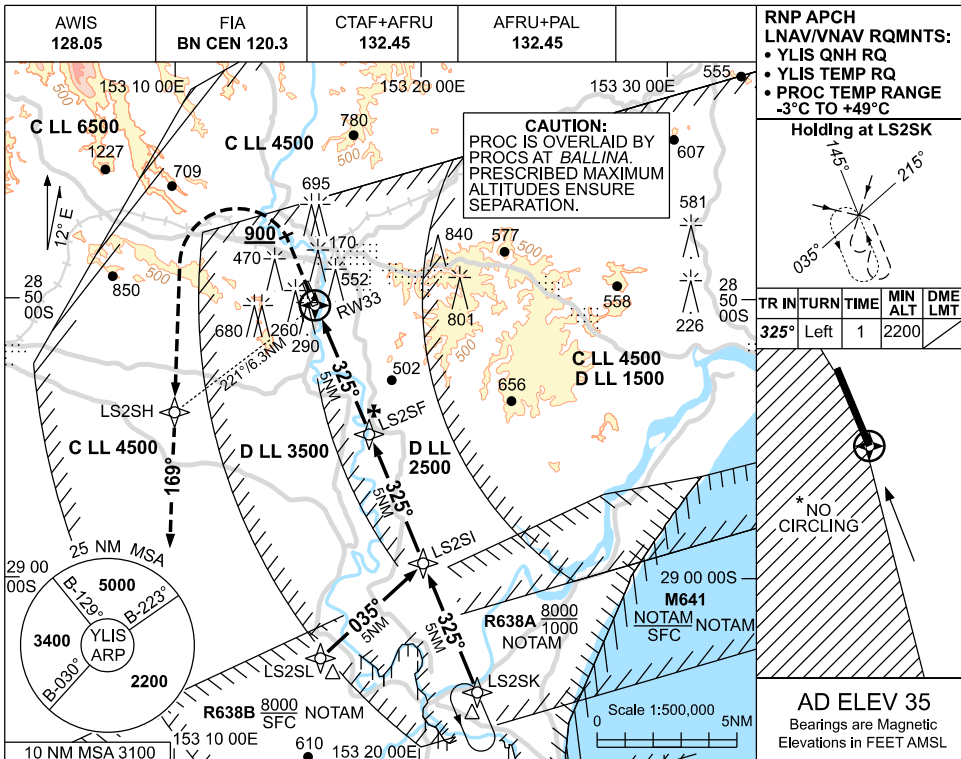


USE QNH

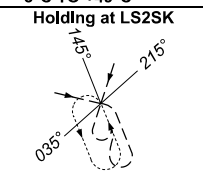
RNP RWY 33

LISMORE, NSW (YLIS)

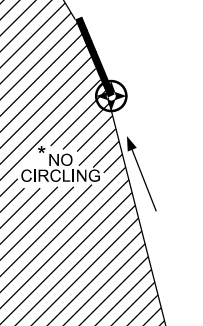
09 JUL 2026



**RNP APCH**  
**LNAV/VNAV RQMNTS:**  
 • YLIS QNH RQ  
 • YLIS TEMP RQ  
 • PROC TEMP RANGE  
 -3°C TO +49°C



TR	INTURN	TIME	MIN ALT	DME LMT
325°	Left	1	2200	

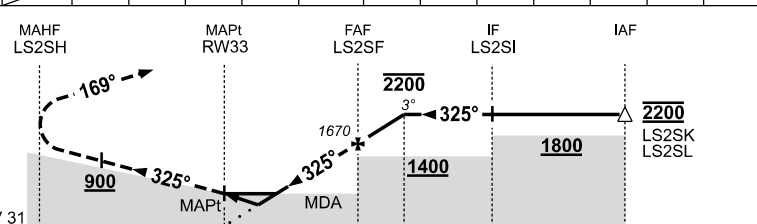


**AD ELEV 35**  
 Bearings are Magnetic  
 Elevations in FEET AMSL

NM TO NEXT WPT	RW33	1.6	2.2	3	4	LS2SF	1	1.7				
ALT (3° APCH PATH)		590	790	1040	1350	1670	1990	2200				

**MISSED APPROACH:**

TRACK 325°.  
 AT OR ABV 800ft,  
 TURN LEFT,  
 TRACK DCT TO LS2SH.  
 FROM LS2SH TRACK 169°,  
 CLIMB TO 2200ft.



NM TO RW33

**NOTES**

- MAX IAS:  
 INITIAL : 210KT.  
 MISSED APCH  
 TURN : 190KT.
- NO CIRCLING WEST OF RWY 15 / 33.
- PROC NOT AVBL WHEN R638A or R638B ACTIVE. ADDITIONALLY, HOLDING AT LS2SK NOT AVBL WHEN M641 ACTIVE.
- COLOUR:  
 SEE SPEC NOTICES.

CATEGORY	A	B	C	D
LNAV/VNAV	590 (559-3.2)			NOT APPLICABLE
LNAV	790 (755-4.3)			
CIRCLING*	1060 (1025-2.4)		1310 (1275-4.0)	
ALTERNATE	(1525-4.4)			

Changes: REVISED PROC, CIRCLING, MSA, AIRSPACE, Editorial.

LISGNO2-187