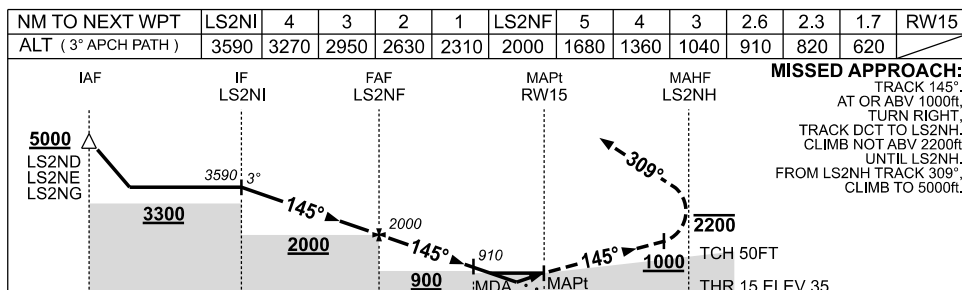
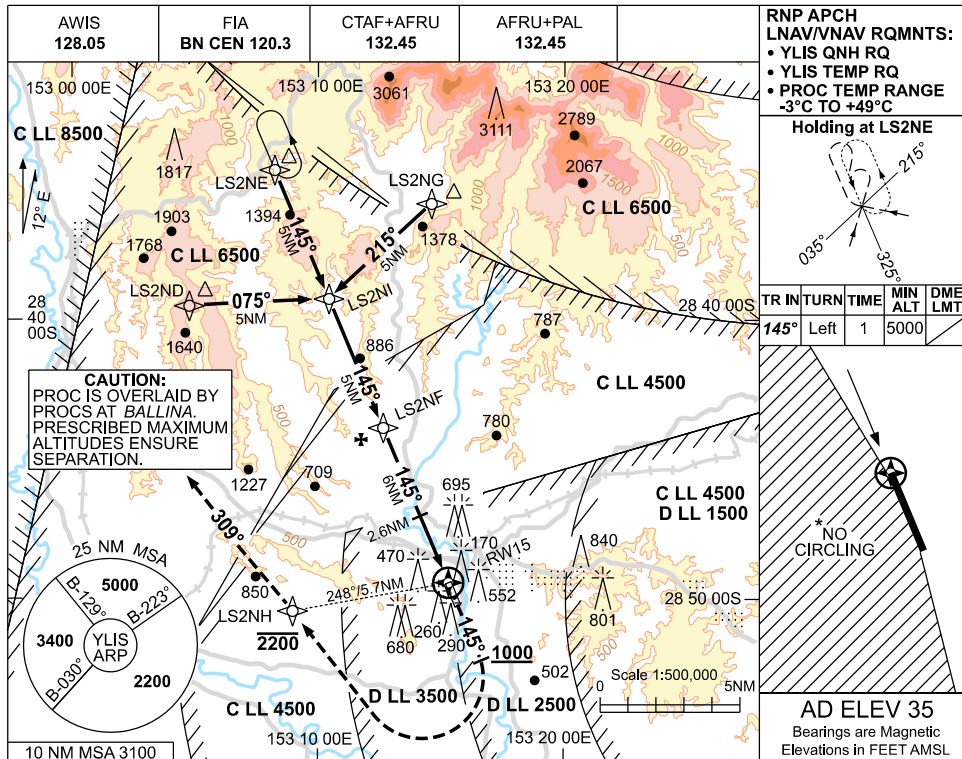


USE QNH

RNP RWY 15
LISMORE, NSW (YLIS)

09 JUL 2026



NOTES

- MAX IAS:
INITIAL : 210KT.
MISSED APCH
TURN : 190KT.
HOLDING: 190KT.
- NO CIRCLING WEST OF RWY 15 / 33.
- COLOUR: SEE SPEC NOTICES.

CATEGORY	A	B	C	D
LNAV/VNAV	620 (585-3.3)			NOT APPLICABLE
LNAV	820 (785-4.5)			
CIRCLING *	1060 (1025-2.4)		1310 (1275-4.0)	
ALTERNATE	(1525-4.4)		(1775-6.0)	

Changes: AIRSPACE, REVISED PROC, NOTES, MSA, CIRCLING, WPT NAMING CONVENTION, Editorial. LISGN01-187