

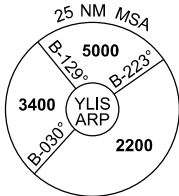
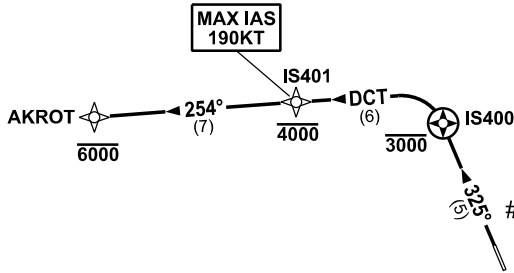
**STANDARD INSTRUMENT DEPARTURES (SID)  
AKROT ONE DEPARTURE (RNAV)  
LISMORE, QLD (YLIS)**

**09 JUL 2026**

AWIS 128.05	FIA BN CEN 120.3	CTAF+AFRU 132.45	AFRU+PAL 132.45		Bearings are Magnetic Elevations in FEET AMSL
----------------	---------------------	---------------------	--------------------	--	--

NOT TO SCALE

**RNP 1**



**# CAUTION  
TREES IN  
RWY 33  
DEP AREA.**

10 NM MSA 3100

**AKROT ONE DEPARTURE**

**RWY 33**

GRAD 4.1% to 900ft, then 3.3%  
MAX IAS 190KT until IS401

- Track 325° to IS400  
**Cross** IS400 AT or BLW 3000ft
- Turn LEFT, track DCT to IS401  
**Cross** IS401 AT or BLW 4000ft
- Track 254° to AKROT  
**Cross** AKROT AT or BLW 6000ft

Changes: NEW PROCEDURE.

LISDP02-187