

**STANDARD INSTRUMENT DEPARTURES (SID)  
LUKLU ONE DEPARTURE (RNAV)  
LISMORE, QLD (YLIS)**

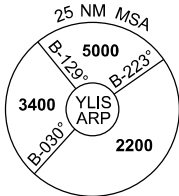
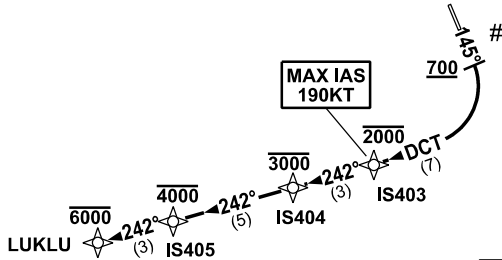
**09 JUL 2026**

AWIS 128.05	FIA BN CEN 120.3	CTAF+AFRU 132.45	AFRU+PAL 132.45		Bearings are Magnetic Elevations in FEET AMSL
----------------	---------------------	---------------------	--------------------	--	--

NOT TO SCALE



**RNP 1**



**# CAUTION  
TREES IN  
RWY 15  
DEP AREA.**

10 NM MSA 3100

**LUKLU ONE DEPARTURE**

**RWY 15**

GRAD 4.7% to 700ft, then 3.3%  
MAX IAS 190KT until IS403

- Track 145°
- AT or ABOVE 700ft turn RIGHT
- Track DCT to IS403
- **Cross** IS403 AT or BLW 2000ft
- Track 242° to IS404
- **Cross** IS404 AT or BLW 3000ft
- Track 242° to IS405
- **Cross** IS405 AT or BLW 4000ft
- Track 242° to LUKLU
- **Cross** LUKLU AT or BLW 6000ft

Changes: NEW PROCEDURE.

LISDP01-187