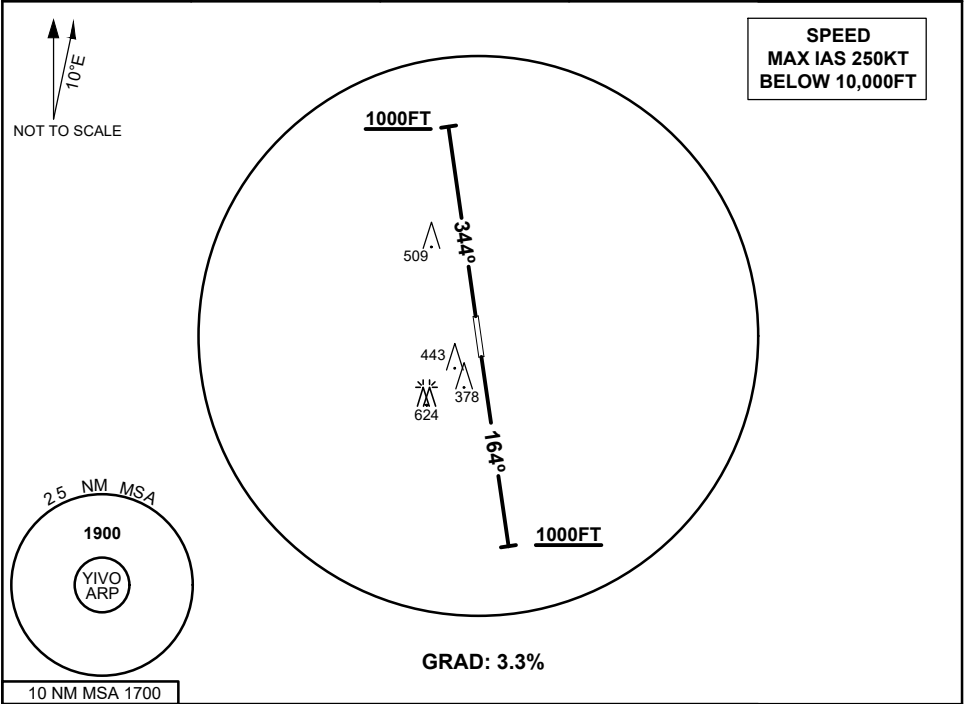


**STANDARD INSTRUMENT DEPARTURE**  
**IVANHOE ONE DEPARTURE**  
**IVANHOE, NSW (YIVO)**

**13 JUN 2024**

AWIS 133.7	FIA ML CEN 124.9	CTAF 126.7	PAL 126.7	BRG are MAG ELEV in FEET AMSL
---------------	---------------------	---------------	--------------	----------------------------------



**IVANHOE ONE DEPARTURE**

**RWY 16**

- Track 164°
- At or above 1000FT turn as required
- Continue climb to 1900FT
- Intercept flight plan route

**RWY 34**

- Track 344°
- At or above 1000FT turn as required
- Continue climb to 1900FT
- Intercept flight plan route

**NOTES**

- NIL -

Changes: 10 NM MSA, OBST 624FT

IVODP01-179