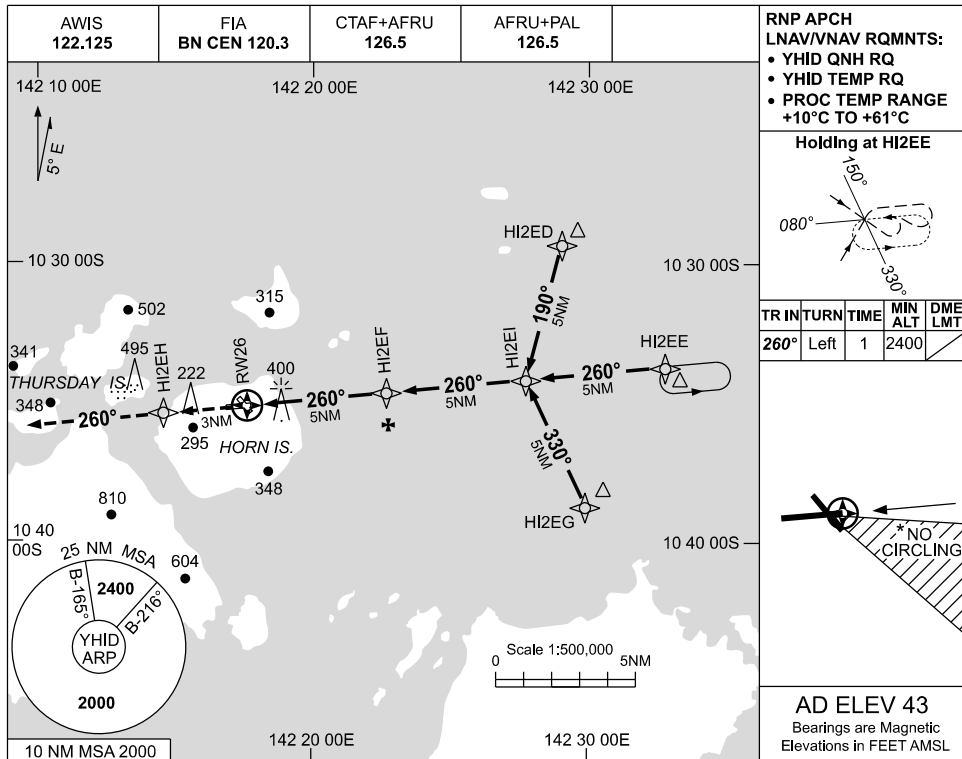


USE QNH

RNP RWY 26  
HORN ISLAND, QLD (YHID)

09 JUL 2026

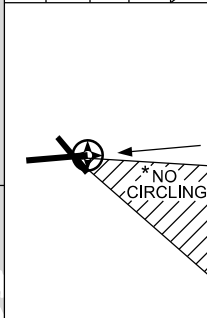


**RNP APCH**  
LNAV/VNAV RQMNTS:

- YHID QNH RQ
- YHID TEMP RQ
- PROC TEMP RANGE +10°C TO +61°C

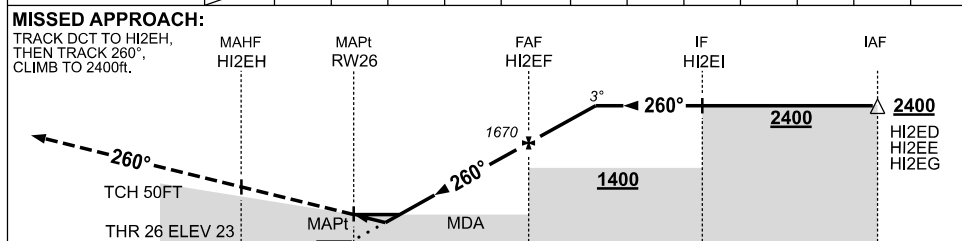
**Holding at HI2EE**

TR	IN	TURN	TIME	MIN ALT	DME LMT
260°	Left	1	2400		



**AD ELEV 43**  
Bearings are Magnetic  
Elevations in FEET AMSL

NM TO NEXT WPT	RW26	1.9	2.4	3	4	HI2EF	1	2.3				
ALT ( 3° APCH PATH )		670	830	1030	1350	1670	1980	2400				



- NOTES**
1. MAX IAS: INITIAL : 210KT.
  - \* 2. NO CIRCLING IN SECTOR SOUTH OF RWY 26 AND EAST OF RWY 32.
  3. LANDING NOT PERMITTED RWY 32.
  4. VERTICAL PATH NOT ALIGNED WITH PAPI RWY 26.

CATEGORY	A	B	C	D
LNAV/VNAV	670 (647-3.7)			NOT APPLICABLE
LNAV	830 (807-4.6)			
CIRCLING *	970 (927-2.4)		1030 (987-4.0)	
ALTERNATE	(1427-4.4)		(1487-6.0)	

Changes: FROM SUP H02/26.

HIDGN02-187