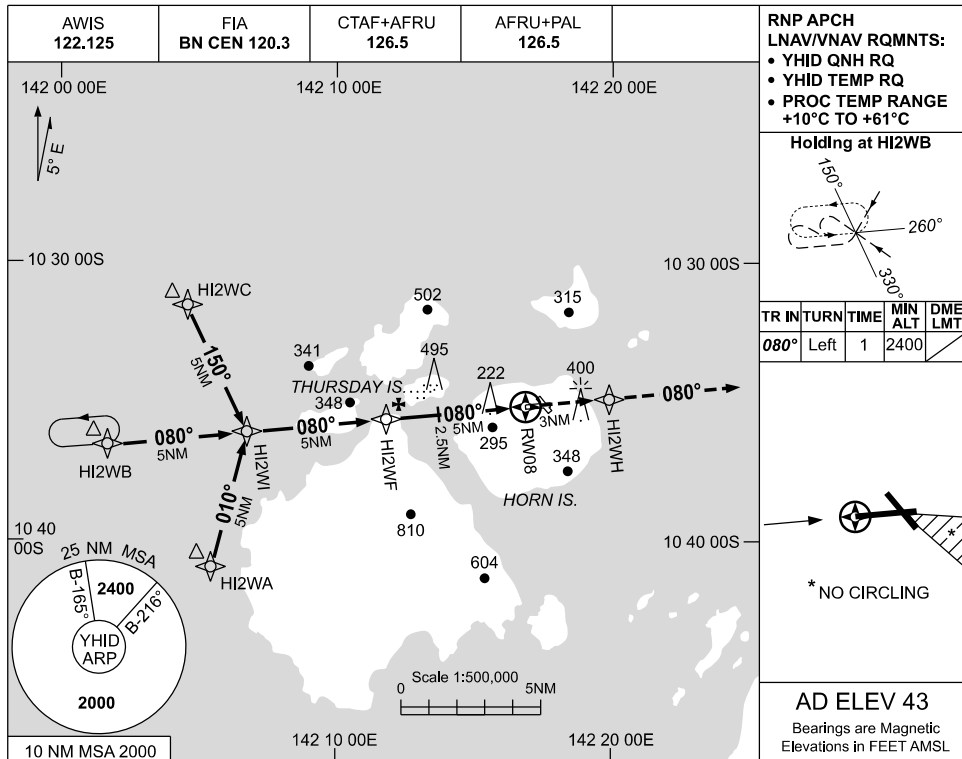


USE QNH

RNP RWY 08

**HORN ISLAND, QLD (YHID)**

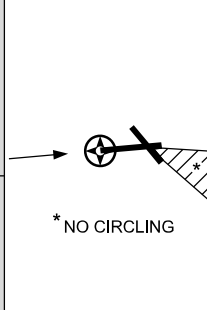
09 JUL 2026



**RNP APCH**  
**LNAV/VNAV RQMNTS:**  
 • YHID QNH RQ  
 • YHID TEMP RQ  
 • PROC TEMP RANGE  
 +10°C TO +61°C

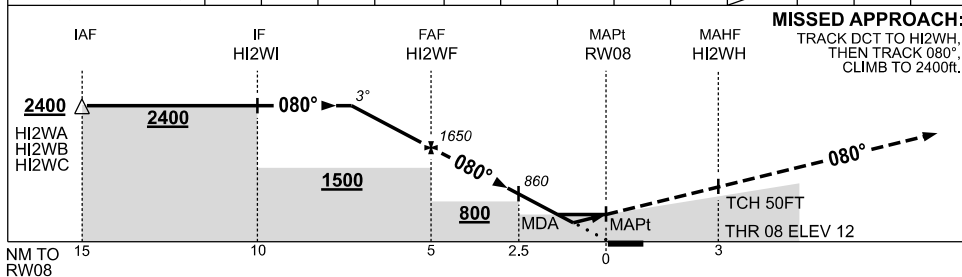
**Holding at HI2WB**

TR	IN TURN	TIME	MIN ALT	DME LMT
080°	Left	1	2400	



**AD ELEV 43**  
 Bearings are Magnetic  
 Elevations in FEET AMSL

NM TO NEXT WPT	2.3	2	1	HI2WF	4	3	2.5	2	1.5	RW08
ALT (3° APCH PATH)	2400	2290	1970	1650	1340	1020	860	690	540	



**MISSED APPROACH:**  
 TRACK DCT TO HI2WH,  
 THEN TRACK 080°,  
 CLIMB TO 2400ft.

**NOTES**

CATEGORY	A	B	C	D
LNAV/VNAV	540 (528-3.0)			NOT APPLICABLE
LNAV	690 (678-3.9)			
CIRCLING *	970 (927-2.4)		1030 (987-4.0)	
ALTERNATE	(1427-4.4)		(1487-6.0)	

- MAX IAS:  
INITIAL : 210KT.
- NO CIRCLING IN SECTOR SOUTH OF RWY 26 AND EAST OF RWY 32.
- LANDING NOT PERMITTED RWY 32.

Changes: FROM SUP H02/26.

HIDGN01-187